

# Recombinant Human MAPT protein, His-mCherry-tagged

Cat. No. MAPT-4711H Lot. No. (See product label)

## SPECIFICATION

<b>Product Overview</b>	Recombinant Human MAPT protein(P10636)(1-441 aa), fused with N-terminal His tag and C-terminal mCherry tag, was expressed in Yeast.
<b>Species</b>	Human
<b>Source</b>	Yeast
<b>ProteinLength</b>	1-441 aa
<b>Form</b>	For liquid formulations, the standard storage buffer consists of a Tris or PBS based solution supplemented with 5-50% glycerol. When provided as lyophilized powder, the product undergoes freeze-drying from a Tris- or PBS-based formulation containing 6% trehalose, adjusted to pH 8.0 prior to the lyophilization process.
<b>Molecular Mass</b>	74.6 kDa
<b>AASequence</b>	<p>MAEPRQEFEVMEHDHAGTYGLGDRKDQGGYTMHQDQEGD TDAGLKESPLQTPTED  GSEEPGSETSDAKSTPTAEDVTAPLVDEGAPGKQAAAQPHT EIP EGTTAEEAGIGDT  PSLEDEAAGHV TQARMVSKSKDGTGSDDKKAKGADGKTKIATPRGAAPP GQKQQA  NATRIPAKTPPAPKTPPSSGEPKSGDRSGYSSPGSPGTPGSRSRTPSLPTPTRE  PKKVAVVRTPPKSPSSAKSRLQTAPVMPDLKNVKSKIGSTENLKHQP GGGK VQIIN  KKLDLSNVQSKCGSKDNIKHVPGGGSVQIVYKPV DLSKVTSKCGSLGNIHHKPGGG  QVEVKSEKLDKDRVQSKIGSLDNITHVPGGGNKKIETHKLTFR ENAKAKTDHGAEIV  YKSPVSGDTSRHL SNVSSTGSDIMVDSPQLATLADEV SASLAKQGL</p>

 Tel: 1-631-559-9269 1-516-512-3133

 Email: [info@creative-biomart.com](mailto:info@creative-biomart.com)  Fax: 1-631-938-8127

 45-1 Ramsey Road, Shirley, NY 11967, USA

<b>Purity</b>	Greater than 90% as determined by SDS-PAGE.
<b>Storage</b>	Store at -20°C/-80°C upon receipt, aliquoting is necessary for mutiple use. Avoid repeated freeze-thaw cycles.
<b>Reconstitution</b>	Please reconstitute protein indeionized sterile water to a concentration of 0.1-1.0 mg/mL. Aliquot for long-term storage at -80°C.

## GENE INFORMATION

<b>Gene Name</b>	MAPT microtubule-associated protein tau [ Homo sapiens ]
<b>Official Symbol</b>	MAPT
<b>Synonyms</b>	MAPT; microtubule-associated protein tau; DDPAC, MAPTL; FLJ31424; FTDP 17; G protein beta1/gamma2 subunit interacting factor 1; MGC138549; microtubule associated protein tau; isoform 4; MSTD; MTBT1; MTBT2; PPND; tau; TAU; PHF-tau; paired helical filament-tau; neurofibrillary tangle protein; microtubule-associated protein tau, isoform 4; G protein beta1/gamma2 subunit-interacting factor 1; DDPAC; MAPTL; FTDP-17;
<b>Gene ID</b>	4137
<b>mRNA Refseq</b>	NM_001123066
<b>Protein Refseq</b>	NP_001116538
<b>MIM</b>	157140
<b>UniProt ID</b>	P10636

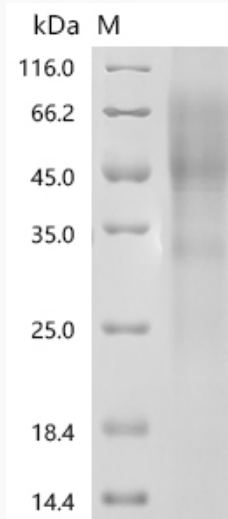
 Tel: 1-631-559-9269 1-516-512-3133

 Email: [info@creative-biomart.com](mailto:info@creative-biomart.com)  Fax: 1-631-938-8127

 45-1 Ramsey Road, Shirley, NY 11967, USA



SDS-PAGE



Tel: 1-631-559-9269 1-516-512-3133

Email: [info@creative-biomart.com](mailto:info@creative-biomart.com) Fax: 1-631-938-8127

45-1 Ramsey Road, Shirley, NY 11967, USA