

# Recombinant Human microtubule-associated protein tau Protein, GST-tagged

Cat. No. MAPT-51H Lot. No. (See product label)

## SPECIFICATION

<b>Product Overview</b>	The sequence (Accession # AAC04279.1) corresponding to the full length human Tau-441 (2N4R isoform) protein along with GST tag was expressed in E. coli. Recombinant Tau-441 protein was purified from bacterial lysate using proprietary method.
<b>Species</b>	Human
<b>Source</b>	E.coli
<b>ProteinLength</b>	1-758aa
<b>Description</b>	This gene encodes the microtubule-associated protein tau (MAPT) whose transcript undergoes complex, regulated alternative splicing, giving rise to several mRNA species. MAPT transcripts are differentially expressed in the nervous system, depending on stage of neuronal maturation and neuron type. MAPT gene mutations have been associated with several neurodegenerative disorders such as Alzheimer's disease, Pick's disease, frontotemporal dementia, cortico-basal degeneration and progressive supranuclear palsy.
<b>Tag</b>	Non
<b>Form</b>	Lyophilized
<b>Molecular Mass</b>	71.8 kDa (higher apparent mass in SDS-PAGE)

 Tel: 1-631-559-9269 1-516-512-3133

 Email: [info@creative-biomart.com](mailto:info@creative-biomart.com)  Fax: 1-631-938-8127

 45-1 Ramsey Road, Shirley, NY 11967, USA

<b>Purity</b>	≥90% by SDS-PAGE
<b>Applications</b>	ELISA; Western Blotting
<b>Usage</b>	Research use
<b>Storage</b>	Store at 2-4 centigrade for immediate use within 1 week or at –80 centigrade for long-term storage. Avoid repeated freeze-thaw cycles
<b>Storage Buffer</b>	The purified Tau-441 is supplied as lyophilized powder salt free.

## GENE INFORMATION

<b>Gene Name</b>	<a href="#">MAPT microtubule-associated protein tau [ Homo sapiens (human) ]</a>
<b>Official Symbol</b>	<a href="#">MAPT</a>
<b>Synonyms</b>	MAPT; microtubule-associated protein tau; DDPAC, MAPTL; FLJ31424; FTDP 17; G protein beta1/gamma2 subunit interacting factor 1; MGC138549; microtubule associated protein tau; isoform 4; MSTD; MTBT1; MTBT2; PPND; tau; TAU; PHF-tau; paired helical filament-tau; neurofibrillary tangle protein; microtubule-associated protein tau, isoform 4; G protein beta1/gamma2 subunit-interacting factor 1; DDPAC; MAPTL; FTDP-17
<b>Gene ID</b>	<a href="#">4137</a>
<b>mRNA Refseq</b>	<a href="#">NM_001123066</a>
<b>Protein Refseq</b>	<a href="#">NP_001116538</a>
<b>MIM</b>	<a href="#">157140</a>

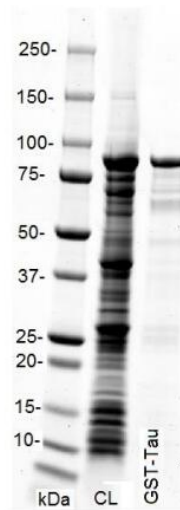
 Tel: 1-631-559-9269 1-516-512-3133

 Email: [info@creative-biomart.com](mailto:info@creative-biomart.com)  Fax: 1-631-938-8127

 45-1 Ramsey Road, Shirley, NY 11967, USA

UniProt ID

P10636

**Human GST-Tau-441  
on SDS-PAGE**

Purified protein was loaded onto 10-20% Tris-HCl gel at 2  $\mu$ g/well. CL=unpurified cell lysate, GST-Tau=purified GST-Tau fusion protein.

 Tel: 1-631-559-9269 1-516-512-3133

 Email: [info@creative-biomart.com](mailto:info@creative-biomart.com)  Fax: 1-631-938-8127

 45-1 Ramsey Road, Shirley, NY 11967, USA