

Recombinant Human MAPT protein, His-tagged

Cat. No. MAPT-528H Lot. No. (See product label)

SPECIFICATION

Product Overview	Recombinant Human MAPT protein(NP_058525.1) (Ala2-Leu352) was expressed in E.coli with a polyhistidine tag at the N-terminus.
Species	Human
Source	E.coli
ProteinLength	2-352 aa
Form	Lyophilized from sterile PBS, pH 7.4.
Molecular Mass	The recombinant human MAPT consists of 367 amino acids and predicts a molecular mass of 38.7 KDa. It migrates as an approximately 40-50 KDa band in SDS-PAGE under reducing conditions.
Purity	> 85 % as determined by SDS-PAGE
Storage	Store it under sterile conditions at -20°C to -80°C upon receiving. Recommend to aliquot the protein into smaller quantities for optimal storage. Avoid repeated freeze-thaw cycles.
Reconstitution	It is recommended that sterile water be added to the vial to prepare a stock solution of 0.2 ug/ul. Centrifuge the vial at 4°C before opening to recover the entire contents.

GENE INFORMATION

 Tel: 1-631-559-9269 1-516-512-3133

 Email: info@creative-biomart.com  Fax: 1-631-938-8127

 45-1 Ramsey Road, Shirley, NY 11967, USA

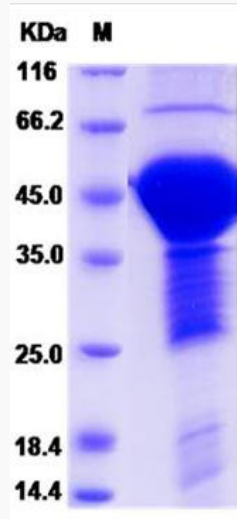
Gene Name	MAPT microtubule-associated protein tau [Homo sapiens]
Official Symbol	MAPT
Synonyms	MAPT; microtubule-associated protein tau; DDPAC, MAPTL; FLJ31424; FTDP 17; G protein beta1/gamma2 subunit interacting factor 1; MGC138549; microtubule associated protein tau; isoform 4; MSTD; MTBT1; MTBT2; PPND; tau; TAU; PHF-tau; paired helical filament-tau; neurofibrillary tangle protein; microtubule-associated protein tau, isoform 4; G protein beta1/gamma2 subunit-interacting factor 1; DDPAC; MAPTL; FTDP-17;
Gene ID	4137
mRNA Refseq	NM_001123066
Protein Refseq	NP_001116538
MIM	157140
UniProt ID	P10636

 Tel: 1-631-559-9269 1-516-512-3133

 Email: info@creative-biomart.com  Fax: 1-631-938-8127

 45-1 Ramsey Road, Shirley, NY 11967, USA

SDS-PAGE



 Tel: 1-631-559-9269 1-516-512-3133

 Email: info@creative-biomart.com  Fax: 1-631-938-8127

 45-1 Ramsey Road, Shirley, NY 11967, USA