

Recombinant Human MAPT Protein

Cat. No. MAPT-53H Lot. No. (See product label)

SPECIFICATION

Product Overview	Recombinant Human Tau is produced by our E.coli expression system and the target gene encoding Met1-Leu441 is expressed.
Species	Human
Source	E.coli
ProteinLength	1-441 a.a.
Description	<p>Tau is a microtubule-associated protein expressed primarily in neurons. Tau promotes the assembly and stabilization of microtubules along with other MAP proteins. It is thought that other proteins can compensate for the loss of Tau protein function as Tau knockout mice are viable and show no signs of neurodegeneration.</p> <p>There are multiple isoforms of Tau created by alternative splicing of exons 2, 3, and 10. When tau proteins are defective and no longer stabilize microtubules properly, they can result in several neurodegenerative disorders such as Alzheimer's disease, Pick's disease, frontotemporal dementia, cortico-basal degeneration and progressive supranuclear palsy.</p>
Form	Lyophilized from a 0.2 um filtered solution of 20mM PB, 150mM NaCl, 1mM EDTA, pH 7.5.
Molecular Mass	<p>Predicted Molecular Weight: 45.8kDa</p> <p>Apparent Molecular Weight: 45-66.2kDa, reducing conditions.</p>

 Tel: 1-631-559-9269 1-516-512-3133

 Email: info@creative-biomart.com  Fax: 1-631-938-8127

 45-1 Ramsey Road, Shirley, NY 11967, USA

AA Sequence	Met1-Leu441
Endotoxin	Less than 1 EU/ug.
Purity	>90% as determined by SDS-PAGE.
Storage	<p>Lyophilized protein should be stored at < -20 centigrade, though stable at room temperature for 3 weeks.</p> <p>Reconstituted protein solution can be stored at 4-7 centigrade for 2-7 days. Aliquots of reconstituted samples are stable at < -20 centigrade for 3 months.</p> <p>Always centrifuge tubes before opening. Do not mix by vortex or pipetting.</p>
Reconstitution	<p>It is not recommended to reconstitute to a concentration less than 100µg/ml.</p> <p>Dissolve the lyophilized protein in distilled water.</p> <p>Please aliquot the reconstituted solution to minimize freeze-thaw cycles.</p>
Quality Statement	Purity: greater than 90% as determined by reducing SDS-PAGE.
Shipping	<p>The product is shipped at ambient temperature.</p> <p>Upon receipt, store it immediately at the temperature listed below.</p>

GENE INFORMATION

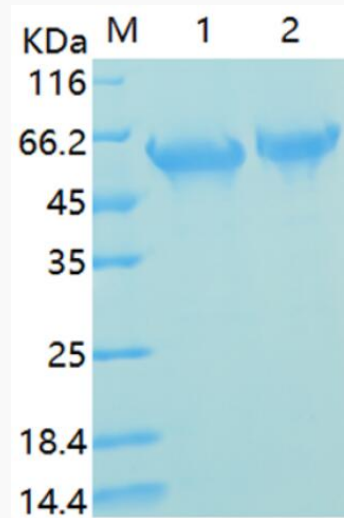
Gene Name	MAPT microtubule associated protein tau [Homo sapiens (human)]
Official Symbol	MAPT
Synonyms	TAU; MSTD; PPND; DDPAC; MAPTL; MTBT1; MTBT2; tau-40; FTDP-17; PPP1R103; Microtubule-associated protein tau; Neurofibrillary tangle protein; Paired helical filament-tau; Tau-F; MAPT-F

 Tel: 1-631-559-9269 1-516-512-3133

 Email: info@creative-biomart.com  Fax: 1-631-938-8127

 45-1 Ramsey Road, Shirley, NY 11967, USA

Gene ID	4137
mRNA Refseq	NM_001123066.4
Protein Refseq	NP_001116538.2
MIM	157140
UniProt ID	P10636

SDS-PAGE

M: Protein Marker; 1.Reduce sample (2ug).2.Non-reduce sample (2ug).

 Tel: 1-631-559-9269 1-516-512-3133

 Email: info@creative-biomart.com  Fax: 1-631-938-8127

 45-1 Ramsey Road, Shirley, NY 11967, USA