

Recombinant Human MAPT Protein, Myc/DDK-tagged, C13 and N15-labeled

Cat. No. MAPT-555H Lot. No. (See product label)

SPECIFICATION

Product Overview	MAPT MS Standard C13 and N15-labeled recombinant protein (NP_058525) with a C-terminal MYC/DDK tag, was expressed in HEK293 cells.
Species	Human
Source	HEK293
Description	This gene encodes the microtubule-associated protein tau (MAPT) whose transcript undergoes complex, regulated alternative splicing, giving rise to several mRNA species. MAPT transcripts are differentially expressed in the nervous system, depending on stage of neuronal maturation and neuron type. MAPT gene mutations have been associated with several neurodegenerative disorders such as Alzheimer's disease, Pick's disease, frontotemporal dementia, cortico-basal degeneration and progressive supranuclear palsy.
Molecular Mass	36.6 kDa
AA Sequence	MAEPRQEFEVMDHAGTYGLGDRKDQGGYTMHQDQEGD TDAGLKAE EAGIGDTP SLEDEAAGHV TQARMVSKSKDGTGSDDKKAKGADGKTKIATPRGAAPPGQKGQAN ATRIPAKTPPAPKTPPSSGEPKSGDRSGYSSPGSPGTPGSRSRTPSLPTPPTREP KKVAVVRTPPKSPSSAKSRLQTAPVPMPDLKNVSKIGSTENLKHQPGGGKVQIVYK PVDLSKVTSKCGSLGNIHHKPGGGQVEVKSEKLDKDRVQSKIGSLDNITHVPGGG NKKIETHKLTFR ENAKAKTDHGAEIVYKSPVVSGDTS PRHLSNV SSTGSIDMVDSPQ

 Tel: 1-631-559-9269 1-516-512-3133

 Email: info@creative-biomart.com  Fax: 1-631-938-8127

 45-1 Ramsey Road, Shirley, NY 11967, USA

LATLADEVSAASLAKQGLTRTRPLEQKLISEEDLAANDILDYKDDDDKV

Purity > 80% as determined by SDS-PAGE and Coomassie blue staining

Stability Stable for 3 months from receipt of products under proper storage and handling conditions.

Storage Store at -80 centigrade. Avoid repeated freeze-thaw cycles.

Concentration 50 µg/mL as determined by BCA

Storage Buffer 100 mM glycine, 25 mM Tris-HCl, pH 7.3.

GENE INFORMATION

Gene Name [MAPT microtubule-associated protein tau \[Homo sapiens \(human\) \]](#)

Official Symbol [MAPT](#)

Synonyms

MAPT; microtubule-associated protein tau; DDPAC, MAPTL; FLJ31424; FTDP 17; G protein beta1/gamma2 subunit interacting factor 1; MGC138549; microtubule associated protein tau; isoform 4; MSTD; MTBT1; MTBT2; PPND; tau; TAU; PHF-tau; paired helical filament-tau; neurofibrillary tangle protein; microtubule-associated protein tau, isoform 4; G protein beta1/gamma2 subunit-interacting factor 1; DDPAC; MAPTL; FTDP-17;

Gene ID [4137](#)

mRNA Refseq [NM_016841](#)

Protein Refseq [NP_058525](#)

 Tel: 1-631-559-9269 1-516-512-3133

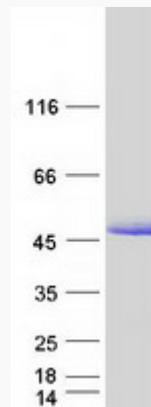
 Email: info@creative-biomart.com  Fax: 1-631-938-8127

 45-1 Ramsey Road, Shirley, NY 11967, USA

MIM 157140

UniProt ID P10636

SDS-PAGE



 Tel: 1-631-559-9269 1-516-512-3133

 Email: info@creative-biomart.com  Fax: 1-631-938-8127

 45-1 Ramsey Road, Shirley, NY 11967, USA