

# Recombinant Rhesus Macaque MAPT Protein (2-459 aa), His-SUMO-tagged

**Cat. No.** MAPT-646R    **Lot. No.** (See product label)

## SPECIFICATION

|                         |   |
|-------------------------|---|
| <b>Product Overview</b> | Recombinant Rhesus Macaque MAPT Protein (2-459 aa) is produced by E. coli expression system. This protein is fused with a 6xHis-SUMO tag at the N-terminal. Protein Description: Full Length of Mature Protein.   |
| <b>Species</b>          | Rhesus macaque  |
| <b>Source</b>           | E.coli  |
| <b>ProteinLength</b>    | 2-459 aa  |
| <b>Description</b>      | Promotes microtubule assbly and stability, and might be involved in the establishment and maintenance of neuronal polarity. The C-terminus binds axonal microtubules while the N-terminus binds neural plasma mbrane components, suggesting that tau functions as a linker protein between both. Axonal polarity is predetermined by tau localization (in the neuronal cell) in the domain of the cell body defined by the centrosome. The short isoforms allow plasticity of the cytoskeleton whereas the longer isoforms may preferentially play a role in its stabilization. |
| <b>Form</b>             | Tris-based buffer, 50% glycerol   |
| <b>Molecular Mass</b>   | 63.8 kDa  |
| <b>AA Sequence</b>      | AEPRQEFDMEDHAGTYGLGDRKDQEGYTMLQDQEGD TDAGLKESPLQTPAEDG<br>SEELGSETSDAKSTPTAEDVTAPLVDERAPGEQAAAQPHMEIPEGTTAEEAGIGDTP   |

 Tel: 1-631-559-9269    1-516-512-3133

 Email: [info@creative-biomart.com](mailto:info@creative-biomart.com)     Fax: 1-631-938-8127

 45-1 Ramsey Road, Shirley, NY 11967, USA



SLEDEAAGHVVTQARMVSKSKDGTGSDDKKAKGADGKTKIATPRGAAPPGQKGQAN  
ATRIPAKTPPAPKTPPSSATKQVQRKPPPAEPTSERGEPKSGDRSGYSSPGSPGT  
PGSRSRTPSLPTPPAREPKKVAVVRTPPKSPSSAKSRLQTAPVPMPDLKNVSKIGS  
TENLKHQPGGGKVQIINKKLDLSNVQSKCGSKDNIKHVPGGGSVQIVYKPVDSLKVT  
SKCGSLGNIHHKPGGGQVEVKSEKLDKDRVQSKIGSLDNITHVPGGGNKKIETHKL  
TFRENAKAKTDHGAEIVYKSPVVSGDTSRHLNSVSSTGSIDMVDSPQLATLADEV  
ASLAKQGL

**Purity** > 90% as determined by SDS-PAGE.

**Notes** Repeated freezing and thawing is not recommended. Store working aliquots at 4 centigrade for up to one week.

**Storage** The shelf life is related to many factors, storage state, buffer ingredients, storage temperature and the stability of the protein itself. Generally, the shelf life of liquid form is 6 months at -20 centigrade/-80 centigrade. The shelf life of lyophilized form is 12 months at -20 centigrade/-80 centigrade.

**Concentration** A hardcopy of COA with concentration instruction is sent along with the products.

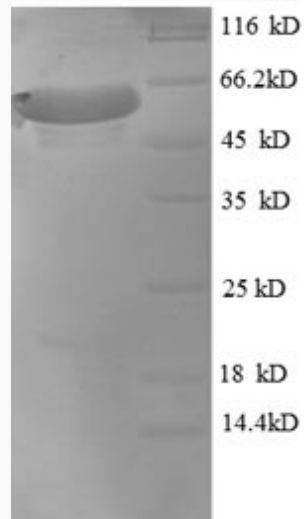
## GENE INFORMATION

**UniProt ID** [P57786](#)

Tel: 1-631-559-9269 1-516-512-3133

Email: [info@creative-biomart.com](mailto:info@creative-biomart.com) Fax: 1-631-938-8127

45-1 Ramsey Road, Shirley, NY 11967, USA



(Tris-Glycine gel) Discontinuous SDS-PAGE (reduced) with 5% enrichment gel and 15% separation gel.

☎ Tel: 1-631-559-9269 1-516-512-3133

☎ Email: [info@creative-biomart.com](mailto:info@creative-biomart.com) ☎ Fax: 1-631-938-8127

☎ 45-1 Ramsey Road, Shirley, NY 11967, USA