

Recombinant Rat MAPT Protein (2-752 aa), His-tagged

Cat. No. MAPT-647R Lot. No. (See product label)

SPECIFICATION

| | |
|-------------------------|---|
| Product Overview | Recombinant Rat MAPT Protein (2-752 aa) is produced by E. coli expression system. This protein is fused with a 6xHis tag at the N-terminal. Protein Description: Full Length of Mature Protein. |
| Species | Rat |
| Source | E.coli |
| ProteinLength | 2-752 aa |
| Description | Promotes microtubule assbly and stability, and might be involved in the establishment and maintenance of neuronal polarity. The C-terminus binds axonal microtubules while the N-terminus binds neural plasma mbrane components, suggesting that tau functions as a linker protein between both. Axonal polarity is predetermined by tau localization (in the neuronal cell) in the domain of the cell body defined by the centrosome. The short isoforms allow plasticity of the cytoskeleton whereas the longer isoforms may preferentially play a role in its stabilization. |
| Form | Tris-based buffer, 50% glycerol |
| Molecular Mass | 82.4 kDa |
| AA Sequence | AEPRQEFDTMEDQAGDYTMLQDQEGDMDHGLKESPPQPPADDGSEEPGSETSDA KSTPTAEDVTAPLVEERAPDKQATAQSHTIPEGTTAEEAGIGDTPNMQAAGHVT QEPQKVEIFSQSLLEPGRREGQAPDSGISDWITHQQVPSMSGAPLPPQGLREATH |

 Tel: 1-631-559-9269 1-516-512-3133

 Email: info@creative-biomart.com  Fax: 1-631-938-8127

 45-1 Ramsey Road, Shirley, NY 11967, USA

QPLGTRPEDVERSHPASELLWQESPQKEAWGKDRLGSEEEVDEDITMDESSQESP
 PSQASLAPGTATPQARSVSASGVSGETTSIPGFPAEGSIPLPADFFSKVSAETQASP
 PEGPGTGPSEEGHEAAPEFTFHVEIKASAPKEQDLEGATVVGAPAEQKARGPSVG
 KGTKEASLLEPTDKQPAAGLPGRPVS RVPQLKARVAGVSKDRTGNDEKKAKTSTPS
 CAKTPSNRPCLSPTRPTPGSSDPLIKPSSPAVCPEPATSPKYVSSVTPRNGSPGTKQ
 MKLKGADGKTGAKIATPRGAATPGQKGTSNATRIPAKTTTPSKTTPPGSGEPPKSGE
 RSGYSSPGSPGTPGSRSRTPSLPTPPTREPKKVAVVRTPPKSPSASKSRLQTAPVP
 MPDLKNVRSKIGSTENLKHQPGGGKVQIINKL DLSNVQSKCGSKDNIKHVPGGGSV
 HIVYKPV DLSKVTSKCGSLGNIHHKPGGGQVEVKSEKLD FKDRVQSKIGSLDNITHV
 PGGGNKKIETHKLT FRENAKAKTDHGAEIVYKSPVVSGDTS PRHLSNVSSSTGSIDMV
 DSPQLATLADEV SASLAKQGL

Purity > 90% as determined by SDS-PAGE.

Notes Repeated freezing and thawing is not recommended. Store working aliquots at 4 centigrade for up to one week.

Storage The shelf life is related to many factors, storage state, buffer ingredients, storage temperature and the stability of the protein itself. Generally, the shelf life of liquid form is 6 months at -20 centigrade/-80 centigrade. The shelf life of lyophilized form is 12 months at -20 centigrade/-80 centigrade.

Concentration A hardcopy of COA with concentration instruction is sent along with the products.

GENE INFORMATION

Gene Name [Mapt microtubule-associated protein tau \[Rattus norvegicus \]](#)

Official Symbol [MAPT](#)

Synonyms MAPT; PHF-tau; pTau; Mtapt; RNPTAU; MGC156663;

 Tel: 1-631-559-9269 1-516-512-3133

 Email: info@creative-biomart.com  Fax: 1-631-938-8127

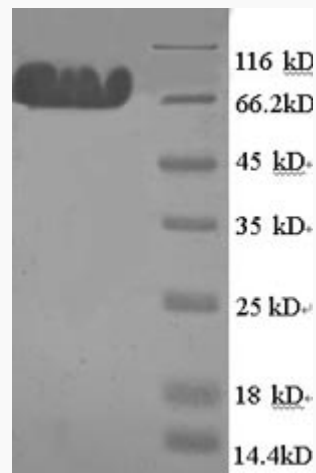
 45-1 Ramsey Road, Shirley, NY 11967, USA

Gene ID 29477

mRNA Refseq NM_017212

Protein Refseq NP_058908

UniProt ID P19332



(Tris-Glycine gel) Discontinuous SDS-PAGE (reduced) with 5% enrichment gel and 15% separation gel.

Tel: 1-631-559-9269 1-516-512-3133

Email: info@creative-biomart.com Fax: 1-631-938-8127

45-1 Ramsey Road, Shirley, NY 11967, USA