

Recombinant Rat MAPT Protein, His-tagged

Cat. No. MAPT-648R Lot. No. (See product label)

SPECIFICATION

Product Overview	Recombinant Rat MAPT Protein(NP_058908)(2-752aa), fused to N-terminal His tag, was expressed in Yeast.
Species	Rat
Source	Yeast
ProteinLength	2-752aa
Form	<p>If the delivery form is liquid, the default storage buffer is Tris/PBS-based buffer, 5%-50% glycerol.</p> <p>If the delivery form is lyophilized powder, the buffer before lyophilization is Tris/PBS-based buffer, 6% Trehalose, pH 8.0.</p>
Molecular Mass	80.4kDa
AA Sequence	<p>AEPRQEFDTMEDQAGDYTMLQDQEGDMDHGLKESPPQPPADDGSEEPGSETSDA KSTPTAEDVTAPLVEERAPDKQATAQSHTEIPEGTTAEEAGIGDTPNMEDQAAGHVT QEPQKVEIFSQSLLVEPGRREGQAPDSGISDWITHQQVPSMSGAPLPPQGLREATH QPLGTRPEDVERSHPASELLWQESPQKEAWGKDRLGSEEEVDEDITMDESSQESP PSQASLAPGTATPQARSVSASGVSGETTSIPGFPAEGSIPLPADFFSKVSAETQASP PEGPGTGPSEEGHEAAPEFTFHVEIKASAPKEQDLEGATVVGAPAEQKARGPSVG KGTKEASLLEPTDKQPAAGLPGRPVSRVQLKARVAGVSKDRTGNDEKKAKTSTPS CAKTPSNRPCLSPTRPTPGSSDPLIKPSSPAVCPEPATSPKYVSSVTPRNGSPGTKQ MKLKGADGKTGAKIATPRGAATPGQKGTSNATRIPAKTTTSPKTPPGSGEPPKSGE</p>

 Tel: 1-631-559-9269 1-516-512-3133

 Email: info@creative-biomart.com  Fax: 1-631-938-8127

 45-1 Ramsey Road, Shirley, NY 11967, USA

RSGYSSPGSPGTPGSRSRTPSLPTPPTREPKKVAVVRTPPKSPSASKSRLQTAPVP
 MPDLKNVRSKIGSTENLKHQPGGGKVQIINKKLDLSNVQSKCGSKDNIKHVPGGGSV
 HIVYKPVDLKVTSTKCGSLGNIHHKPGGGQVEVKSEKLDKDRVQSKIGSLDNITHV
 PGGGNKKIETHKLTFRENAKAKTDHGAEIVYKSPVVSGDTSRHLNSVSSTGSIDMV
 DSPQLATLADEVASASLAKQGL

Purity Greater than 90% as determined by SDS-PAGE.

Storage Store at -20°C upon receipt, aliquoting is necessary for mutiple use. Avoid repeated freeze-thaw cycles.

Reconstitution We recommend that this vial be briefly centrifuged prior to opening to bring the contents to the bottom. Please reconstitute protein in deionized sterile water to a concentration of 0.1-1.0 mg/mL. We recommend to add 5-50% of glycerol (final concentration) and aliquot for long-term storage at -20°C/-80°C. Our default final concentration of glycerol is 50%. Customers could use it as reference.

GENE INFORMATION

Gene Name [Mapt microtubule-associated protein tau \[Rattus norvegicus \]](#)

Official Symbol [MAPT](#)

Synonyms MAPT; microtubule-associated protein tau; PHF-tau; paired helical filament-tau; neurofibrillary tangle protein; Tau microtubule-associated protein; pTau; Mtap; RNPTAU; MGC156663;

Gene ID [29477](#)

mRNA Refseq [NM_017212](#)

 Tel: 1-631-559-9269 1-516-512-3133

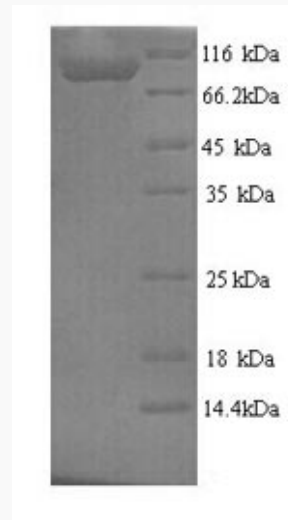
 Email: info@creative-biomart.com  Fax: 1-631-938-8127

 45-1 Ramsey Road, Shirley, NY 11967, USA

Protein Refseq NP_058908

UniProt ID P19332

SDS-PAGE



 Tel: 1-631-559-9269 1-516-512-3133

 Email: info@creative-biomart.com  Fax: 1-631-938-8127

 45-1 Ramsey Road, Shirley, NY 11967, USA