

Recombinant Rhesus macaque MAPT protein(2-459aa), His-tagged

Cat. No. MAPT-654R Lot. No. (See product label)

SPECIFICATION

Product Overview	Recombinant Rhesus macaque MAPT protein(P57786)(2-459aa), fused with N-terminal His tag, was expressed in HEK293.
Species	Rhesus macaque
Source	HEK293
ProteinLength	2-459aa
Form	Lyophilized from a 0.2 µm filtered 20 mM Tris-HCl, 0.5 M NaCl, 6% Trehalose, pH 8.0
Bio-activity	Measured by its binding ability in a functional ELISA. Immobilized Macaca mulatta MAPT at 2 µg/mL can bind anti-MAPT recombinant antibody, the EC50 is 2.464-3.979 ng/mL.
Molecular Mass	50.6 kDa
Endotoxin	Less than 1.0 EU/ug as determined by LAL method.
Purity	Greater than 95% as determined by SDS-PAGE.
Storage	Store at -20°C/-80°C upon receipt, aliquoting is necessary for mutiple use. Avoid repeated freeze-thaw cycles.

 Tel: 1-631-559-9269 1-516-512-3133

 Email: info@creative-biomart.com  Fax: 1-631-938-8127

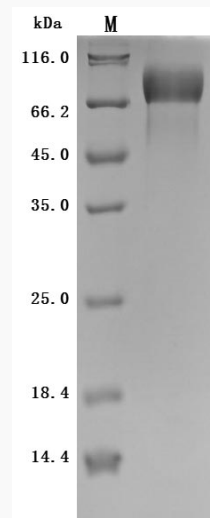
 45-1 Ramsey Road, Shirley, NY 11967, USA

Reconstitution

We recommend that this vial be briefly centrifuged prior to opening to bring the contents to the bottom. Please reconstitute protein in deionized sterile water to a concentration of 0.1-1.0 mg/mL. We recommend to add 5-50% of glycerol (final concentration) and aliquot for long-term storage at -20°C/-80°C.

AA Sequence

AEPRQEFVDMEDHAGTYGLGDRKDQEGYTMLQDQEGD TDAGLKESPLQTPAEDG
SEELGSETSDAKSTPTAEDVTAPLVDERAPGEQAAAQPHMEIPEGTTAEEAGIGDTP
SLEDEAAGHV TQARMVSKSKDGTGSDDK KAKGADGKTKIATPRGAAPPGQKQAN
ATRIPAKTPPAPKTPPSSATKQVQRKPPPAEPTSERGEPPKSGDRSGYSSPGSPGT
PGSRSRTPSLPTPPAREPKKVAVVRTPPKSPSSAKSRLQTAPVPM PDLKNVSKIGS
TENLKHQPGGGKVQIINKKLDLSNVQSKCGSKDNIKHVPGGGSVQIVYK PVDLSKVT
SKCGSLGNIHHKPGGGQVEVKSEKLDKDRVQSKIGSLDNITHVPGGGNKKIETHKL
TFRENAKAKTDHGAEIVYKSPVVSGDTSRHL SNVSSTGSIDMVDS PQLATLADEV S
ASLAKQGL

SDS-PAGE

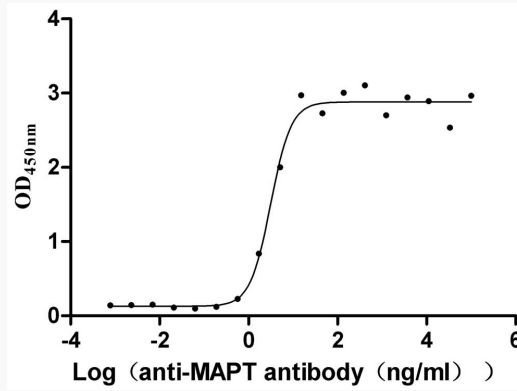
 Tel: 1-631-559-9269 1-516-512-3133

 Email: info@creative-biomart.com  Fax: 1-631-938-8127

 45-1 Ramsey Road, Shirley, NY 11967, USA



Activity



Tel: 1-631-559-9269 1-516-512-3133

Email: info@creative-biomart.com Fax: 1-631-938-8127

45-1 Ramsey Road, Shirley, NY 11967, USA