

Recombinant Human MASP1 Protein, Myc/DDK-tagged, C13 and N15-labeled

Cat. No. MASP1-3311H **Lot. No.** (See product label)

SPECIFICATION

Product Overview	MASP1 MS Standard C13 and N15-labeled recombinant protein (NP_624302) with a C-terminal MYC/DDK tag, was expressed in HEK293 cells.
Species	Human
Source	HEK293
Description	<p>This gene encodes a serine protease that functions as a component of the lectin pathway of complement activation. The complement pathway plays an essential role in the innate and adaptive immune response. The encoded protein is synthesized as a zymogen and is activated when it complexes with the pathogen recognition molecules of lectin pathway, the mannose-binding lectin and the ficolins. This protein is not directly involved in complement activation but may play a role as an amplifier of complement activation by cleaving complement C2 or by activating another complement serine protease, MASP-2. The encoded protein is also able to cleave fibrinogen and factor XIII and may may be involved in coagulation. A splice variant of this gene which lacks the serine protease domain functions as an inhibitor of the complement pathway. Alternate splicing results in multiple transcript variants.</p>
Molecular Mass	81.9 kDa
AA Sequence	MRWLLLYALCFSLSKASAHTVELNNMFGQIQSPGYPSDSEVTWNITVPDGF RIKLYFMHFNLESSYLCEYDYVKVETEDQVLATFCGRETTDTEQTPGQEVVLSPGSF

 Tel: 1-631-559-9269 1-516-512-3133

 Email: info@creative-biomart.com  Fax: 1-631-938-8127

 45-1 Ramsey Road, Shirley, NY 11967, USA

MSITFRSDFSNEERFTGFDAHYMAVDVDECKEREDEELSCDHYCHNYIGGGYYCSCR
 FGYILHTDNRTCRVECSNLFQRTGVITSPDFPNYPKSSSECLYTIELEEGFMVNLQ
 FEDIFDIEDHPEVPCPYDYIKIKVGPVLPFCGEKAPEPISTQSHSVLILFHSDNSGE
 NRGWRLSYRAAGNECPELQPPVHGKIEPSQAKYFFKDQVLVSCDTGYKVLKDNVE
 MDTFQIECLKDGTWSNKIPTCKIVDCRAPGELEHGLITFSTRNNLTTYKSEIKYSCQE
 PYYKMLNNTGIYTCSAQGVWMNKVLRSLPTCLPECGQPSRSLPSLVKRIIGGRN
 AEPGLFPWQALIVVEDTSRVPNDKWFGSGALLSASWILTAHVLRSQRRDTTVIPVS
 KEHVTVYLGLHDVRDKSGAVNSSAARVVLHPDFNIQNYNHDIALVQLQEPVPLGPHV
 MPVCLPRLEPEGPAPHMLGLVAGWGISNPNTVDEIISGTRTLSDVLQYVKLPVVP
 HAECTSYESRSGNYSVTENMFCAGYYEGGKDTCLGDSGGAFVIFDLSQRWVVQ
 GLVSWGGPPEECGSKQVYGVYTKVSNYVDWVWEQMGLPQSVVEPQVERTRTRPLE
 QKLISEEDLAANDILDYKDDDDKV

Purity > 80% as determined by SDS-PAGE and Coomassie blue staining

Stability Stable for 3 months from receipt of products under proper storage and handling conditions.

Storage Store at -80 centigrade. Avoid repeated freeze-thaw cycles.

Concentration 50 µg/mL as determined by BCA

Storage Buffer 100 mM glycine, 25 mM Tris-HCl, pH 7.3.

GENE INFORMATION

Gene Name [MASP1 mannan binding lectin serine peptidase 1 \[Homo sapiens \(human\) \]](#)

Official Symbol [MASP1](#)

Synonyms MASP1; mannan binding lectin serine peptidase 1; 3MC1; MAP1; MASP; RaRF;

 Tel: 1-631-559-9269 1-516-512-3133

 Email: info@creative-biomart.com  Fax: 1-631-938-8127

 45-1 Ramsey Road, Shirley, NY 11967, USA

CRARF; MASP3; MAp44; PRSS5; CRARF1; mannan-binding lectin serine protease 1; C4/C2 activating component of Ra-reactive factor; Ra-reactive factor serine protease p100; complement factor MASP-3; complement-activating component of Ra-reactive factor; mannose-binding lectin-associated serine protease 1; mannose-binding protein-associated serine protease; serine protease 5; EC 3.4.21.-

Gene ID [5648](#)

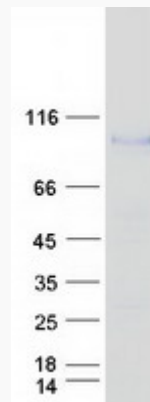
mRNA Refseq [NM_139125](#)

Protein Refseq [NP_624302](#)

MIM [600521](#)

UniProt ID [P48740](#)

SDS-PAGE



 Tel: 1-631-559-9269 1-516-512-3133

 Email: info@creative-biomart.com  Fax: 1-631-938-8127

 45-1 Ramsey Road, Shirley, NY 11967, USA