

# Recombinant Human MASP1 Protein (His20-Pro434), N-His tagged

**Cat. No.** MASP1-3744H    **Lot. No.** (See product label)

## SPECIFICATION

<b>Product Overview</b>	Recombinant human MASP1 (His20-Pro434) fused with the N-His tag was expressed in E. coli.
<b>Species</b>	Human
<b>Source</b>	E.coli
<b>ProteinLength</b>	His20-Pro434
<b>Description</b>	<p>This gene encodes a serine protease that functions as a component of the lectin pathway of complement activation. The complement pathway plays an essential role in the innate and adaptive immune response. The encoded protein is synthesized as a zymogen and is activated when it complexes with the pathogen recognition molecules of lectin pathway, the mannose-binding lectin and the ficolins. This protein is not directly involved in complement activation but may play a role as an amplifier of complement activation by cleaving complement C2 or by activating another complement serine protease, MASP-2. The encoded protein is also able to cleave fibrinogen and factor XIII and may be involved in coagulation. A splice variant of this gene which lacks the serine protease domain functions as an inhibitor of the complement pathway. Alternate splicing results in multiple transcript variants.</p>
<b>Form</b>	Lyophilized powder/frozen liquid
<b>Molecular Mass</b>	49.77 kDa

 Tel: 1-631-559-9269    1-516-512-3133

 Email: [info@creative-biomart.com](mailto:info@creative-biomart.com)     Fax: 1-631-938-8127

 45-1 Ramsey Road, Shirley, NY 11967, USA

<b>Purity</b>	>90% as determined by SDS-PAGE.
<b>Notes</b>	For research use only.
<b>Storage</b>	Use a manual defrost freezer and avoid repeated freeze thaw cycles. Store at 2 to 8 centigrade for one week. Store at -20 to -80 centigrade for twelve months from the date of receipt.
<b>Storage Buffer</b>	0.01M PBS, pH 7.4, 0.02% NLS
<b>Reconstitution</b>	Reconstitute in sterile water for a stock solution.
<b>Shipping</b>	They are shipped out with dry ice/blue ice unless customers require otherwise.

## GENE INFORMATION

<b>Gene Name</b>	MASP1 MBL associated serine protease 1 [ Homo sapiens (human) ]
<b>Official Symbol</b>	MASP1
<b>Synonyms</b>	MASP1; MBL associated serine protease 1; 3MC1; MAP1; MASP; RaRF; CRARF; MAP-1; MASP3; MAP44; PRSS5; CRARF1; MASP-3; mannan-binding lectin serine protease 1; C4/C2 activating component of Ra-reactive factor; Ra-reactive factor serine protease p100; complement factor MASP-3; complement-activating component of Ra-reactive factor; mannan binding lectin serine peptidase 1; mannose-associated serine protease 1; mannose-binding lectin-associated serine protease 1; mannose-binding protein-associated serine protease; serine protease 5; EC 3.4.21.-
<b>Gene ID</b>	5648
<b>mRNA Refseq</b>	NM_139125

 Tel: 1-631-559-9269 1-516-512-3133

 Email: [info@creative-biomart.com](mailto:info@creative-biomart.com)  Fax: 1-631-938-8127

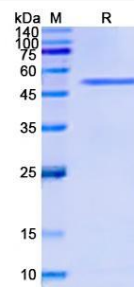
 45-1 Ramsey Road, Shirley, NY 11967, USA

**Protein Refseq** NP\_624302

**MIM** 600521

**UniProt ID** P48740

**SDS-PAGE**



 Tel: 1-631-559-9269 1-516-512-3133

 Email: [info@creative-biomart.com](mailto:info@creative-biomart.com)  Fax: 1-631-938-8127

 45-1 Ramsey Road, Shirley, NY 11967, USA