

Recombinant Human MASP1 Protein (20-699 aa), His-SUMO-tagged

Cat. No. MASP1-648H **Lot. No.** (See product label)

SPECIFICATION

Product Overview	Recombinant Human MASP1 Protein (20-699 aa) is produced by E. coli expression system. This protein is fused with a 6xHis-SUMO tag at the N-terminal. Research Area: Immunology. Protein Description: Full Length of Mature Protein.
Species	Human
Source	E.coli
ProteinLength	20-699 aa
Description	Functions in the lectin pathway of complement, which performs a key role in innate immunity by recognizing pathogens through patterns of sugar moieties and neutralizing them. The lectin pathway is triggered upon binding of mannan-binding lectin (MBL) and ficolins to sugar moieties which leads to activation of the associated proteases MASP1 and MASP2. Functions as an endopeptidase and may activate MASP2 or C2 or directly activate C3 the key component of complement reaction. Isoform 2 may have an inhibitory effect on the activation of the lectin pathway of complement or may cleave IGFBP5.
Form	Tris-based buffer, 50% glycerol
Molecular Mass	93.0 kDa
AA Sequence	HTVELNNMFGQIQSPGYPSDSEVTWNITVPDGFRIKLYFMHFNLESSYLCEYD

 Tel: 1-631-559-9269 1-516-512-3133

 Email: info@creative-biomart.com  Fax: 1-631-938-8127

 45-1 Ramsey Road, Shirley, NY 11967, USA

YVKVETEDQVLATFCGRETTDTEQTPGQEVVLSPGSFMSITFRSDFSNEERFTGFD
 AHYMAVDVDECKEREDEELSCDHCHNYIGGGYCSFRGYILHTDNRTCRVECSND
 LFTQRTGVITSPDFPNYPKSSSECLYTIELEEGFMVNLQFEDIFDIEDHPEVPCPYDYI
 KIKVGPVKLGPFCGEKAPEPISTQSHSVLILFHSDNSGENRGWRLSYRAAGNECP
 QPPVHGKIEPSQAKYFFKDQVLVSCDTGYKVLKDNVEMDTFQIECLKDGTWSNKIPT
 CKIVDCRAPGELEHGLITFSTRNLTYYKSEIKYSCQEPYYKMLNNTGIYTCSAQQV
 WMNKVLGRSLPTCLPVCGLPKFSRKL MARIFNGRPAQKGTTPWIAMLSHLNGQPFC
 GGSLLGSSWIVTAAHCLHQSLDPEDPTLRDSDLLSPSDFKILGKHWRLRSDENEQH
 LGVKHTTLHPQYDPNTFENDVALVELLESPVLNAFVMPICLPEGPQQEGAMVIVSGW
 GKQFLQRFPETLMEIEIPIVDHSTCQKAYAPLKKKVTRDMICAGEKEGGKDACAGDS
 GGPMVTLNRERGGWYLVGTVSWGDDCGKKDRYGVYSYIHHNKDWIQRVTGVRN

Purity > 90% as determined by SDS-PAGE.

Notes Repeated freezing and thawing is not recommended. Store working aliquots at 4 centigrade for up to one week.

Storage The shelf life is related to many factors, storage state, buffer ingredients, storage temperature and the stability of the protein itself. Generally, the shelf life of liquid form is 6 months at -20 centigrade/-80 centigrade. The shelf life of lyophilized form is 12 months at -20 centigrade/-80 centigrade.

Concentration A hardcopy of COA with concentration instruction is sent along with the products.

GENE INFORMATION

Gene Name [MASP1 mannan binding lectin serine peptidase 1 \[Homo sapiens \(human\) \]](#)

Official Symbol [MASP1](#)

Synonyms 3MC1; MAP1; MASP; RaRF; CRARF; MASP3; MAP44; PRSS5; CRARF1;

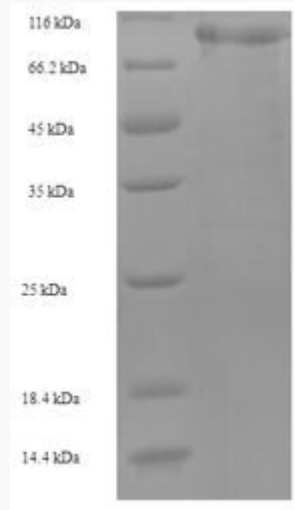
 Tel: 1-631-559-9269 1-516-512-3133

 Email: info@creative-biomart.com  Fax: 1-631-938-8127

 45-1 Ramsey Road, Shirley, NY 11967, USA

Gene ID 5648

UniProt ID P48740



(Tris-Glycine gel) Discontinuous SDS-PAGE (reduced) with 5% enrichment gel and 15% separation gel.

Tel: 1-631-559-9269 1-516-512-3133

Email: info@creative-biomart.com Fax: 1-631-938-8127

45-1 Ramsey Road, Shirley, NY 11967, USA