

Recombinant Full Length Human MASP1 Protein, C-Flag-tagged

Cat. No. MASP1-668HFL **Lot. No.** (See product label)

SPECIFICATION

Product Overview	Recombinant Full Length Human MASP1 Protein, fused to Flag-tag at C-terminus, was expressed in Mammalian cells.
Species	Human
Source	Mammalian Cells
Description	This gene encodes a serine protease that functions as a component of the lectin pathway of complement activation. The complement pathway plays an essential role in the innate and adaptive immune response. The encoded protein is synthesized as a zymogen and is activated when it complexes with the pathogen recognition molecules of lectin pathway, the mannose-binding lectin and the ficolins. This protein is not directly involved in complement activation but may play a role as an amplifier of complement activation by cleaving complement C2 or by activating another complement serine protease, MASP-2. The encoded protein is also able to cleave fibrinogen and factor XIII and may may be involved in coagulation. A splice variant of this gene which lacks the serine protease domain functions as an inhibitor of the complement pathway. Alternate splicing results in multiple transcript variants.
Form	25 mM Tris HCl, pH 7.3, 100 mM glycine, 10% glycerol.
Molecular Mass	49 kDa
AA Sequence	MRWLLLYALCFSLSKASAHTVELNNMFGQIQSPGYPSDSEVTWNITVPDGF

 Tel: 1-631-559-9269 1-516-512-3133

 Email: info@creative-biomart.com  Fax: 1-631-938-8127

 45-1 Ramsey Road, Shirley, NY 11967, USA

RIKLYFMHFNLESS YLCEYDYVKVETEDQVLATFCGRETTDTEQTPGQEVVLSPGS
 FMSITFRSDFSNEERFTGFDAHYMAVDV DECKEREDEELSCDHYCHNYIGGGYCS
 CRFGYILHTDNRTCRVECDNLFTQRTGVITSPDFPNPYPKSS ECLYTIELEEGFMV
 NLQFEDIFDIEDHPEVPCPYDYIKIKVGPVLPFCGKAPPEISTQSHSVLILFH SDN
 SGENRGWRLSYRAAGNECPELQPPVHGKIEPSQAKYFFKDQVLVSCDTGYKVLKD
 NVEMDTFQIECL KDGTWSNKIPTCKIVDCRAPGELEHGLITFSTRNNLTYYKSEIKYS
 CQEPYYKMLNNNTGIYTCSAQGVW MNKVLGRSLPTCLPVCGLPKFSRKL MARIFN
 GRPAQKGTTPWIAMLSHLNGQPFCCGSSLLGSSWIVTAAH CLHQSLDPEDPTLRDS
 DLLSPSDFKIILGKHWRRLRSDENEQHLGVKHTTLHPQYDPNTFENDVALVELLE SPV
 LNAFVMPICLPEGPQQEGAMVIVSGWGKQFLQRFPETLMEIEIPIVDHSTCQKAYAPL
 KKKVTRDMI CAGEKEGGKDACAGDSSGPMVTLNRERGWYLVGTVSWGDDCGK
 KDRYGVVSYIHHNKDWIQRVTGVRNTRTRPLEQKLISEEDLAANDILDYKDDDDKV

Purity	> 80% as determined by SDS-PAGE and Coomassie blue staining.
Stability	Stable for 12 months from the date of receipt of the product under proper storage and handling conditions. Avoid repeated freeze-thaw cycles.
Storage	Store at -80 centigrade.
Concentration	>50 ug/mL as determined by microplate BCA method.
Preparation	Recombinant protein was captured through anti-DDK affinity column followed by conventional chromatography steps.
Protein Families	Druggable Genome, Protease
Protein Pathways	Complement and coagulation cascades
Full Length	Full L.

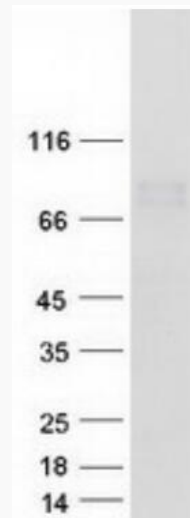
 Tel: 1-631-559-9269 1-516-512-3133

 Email: info@creative-biomart.com  Fax: 1-631-938-8127

 45-1 Ramsey Road, Shirley, NY 11967, USA

GENE INFORMATION

Gene Name	MASP1 MBL associated serine protease 1 [Homo sapiens (human)]
Official Symbol	MASP1
Synonyms	3MC1; MAP1; MASP; RaRF; CRARF; MAP-1; MASP3; MAp44; PRSS5; CRARF1; MASP-3
Gene ID	5648
mRNA Refseq	NM_001879.6
Protein Refseq	NP_001870.3
MIM	600521
UniProt ID	P48740



 Tel: 1-631-559-9269 1-516-512-3133

 Email: info@creative-biomart.com  Fax: 1-631-938-8127

 45-1 Ramsey Road, Shirley, NY 11967, USA



Coomassie blue staining of purified MASP1 protein.

 Tel: 1-631-559-9269 1-516-512-3133

 Email: info@creative-biomart.com  Fax: 1-631-938-8127

 45-1 Ramsey Road, Shirley, NY 11967, USA