

Recombinant Human MASP2 protein, His-tagged

Cat. No. MASP2-1451H Lot. No. (See product label)

SPECIFICATION

Product Overview	Recombinant Human MASP2 protein(O00187)(16-686aa), fused to C-terminal His tag, was expressed in Insect cell.
Species	Human
Source	Insect Cells
ProteinLength	16-686aa
Form	If the delivery form is liquid, the default storage buffer is Tris/PBS-based buffer, 5%-50% glycerol. If the delivery form is lyophilized powder, the buffer before lyophilization is Tris/PBS-based buffer, 6% Trehalose, pH 8.0.
Molecular Mass	79.3 kDa
Purity	Greater than 85% as determined by SDS-PAGE.
Storage	Store at -20°C/-80°C upon receipt, aliquoting is necessary for mutiple use. Avoid repeated freeze-thaw cycles.
Reconstitution	It is recommended that sterile water be added to the vial to prepare a stock solution of 0.2 ug/ul. Centrifuge the vial at 4°C before opening to recover the entire contents.

GENE INFORMATION

 Tel: 1-631-559-9269 1-516-512-3133

 Email: info@creative-biomart.com  Fax: 1-631-938-8127

 45-1 Ramsey Road, Shirley, NY 11967, USA

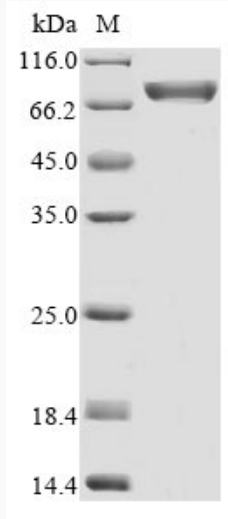
Gene Name	MASP2 mannan-binding lectin serine peptidase 2 [Homo sapiens]
Official Symbol	MASP2
Synonyms	MASP2; mannan-binding lectin serine peptidase 2; mannan binding lectin serine peptidase 1 pseudogene 1 , mannan binding lectin serine protease 1 pseudogene 1 , mannan binding lectin serine protease 2 , MASP1P1; mannan-binding lectin serine protease 2; small MBL-associated protein; MBL-associated serine protease 2; MBL-associated plasma protein of 19 kD; mannan-binding lectin serine protease 1 pseudogene 1; mannose-binding protein-associated serine protease 2; mannan-binding lectin serine peptidase 1 pseudogene 1; sMAP; MAP19; MASP-2; MASP1P1;
Gene ID	10747
mRNA Refseq	NM_006610
Protein Refseq	NP_006601
MIM	605102
UniProt ID	O00187

 Tel: 1-631-559-9269 1-516-512-3133

 Email: info@creative-biomart.com  Fax: 1-631-938-8127

 45-1 Ramsey Road, Shirley, NY 11967, USA

SDS-PAGE



 Tel: 1-631-559-9269 1-516-512-3133

 Email: info@creative-biomart.com  Fax: 1-631-938-8127

 45-1 Ramsey Road, Shirley, NY 11967, USA