

Recombinant Human MASP2 Protein, Fc tagged

Cat. No. MASP2-22H Lot. No. (See product label)

SPECIFICATION

Product Overview Recombinant Human MASP2 Protein with hFc tag was expressed in HEK293.

Species Human

Source HEK293

Description This gene encodes a member of the peptidase S1 family of serine proteases. The encoded preproprotein is proteolytically processed to generate A and B chains that heterodimerize to form the mature protease. This protease cleaves complement components C2 and C4 in order to generate C3 convertase in the lectin pathway of the complement system. The encoded protease also plays a role in the coagulation cascade through cleavage of prothrombin to form thrombin. Myocardial infarction and acute stroke patients exhibit reduced serum concentrations of the encoded protein. Alternative splicing results in multiple transcript variants, at least one of which encodes an isoform that is proteolytically processed.

Purity The purity of the protein is greater than 90 % as determined by SDS-PAGE and Coomassie blue staining.

Storage Store at -20 to -80 centigrade for 12 months in lyophilized form. After reconstitution, if not intended for use within a month, aliquot and store at -80 centigrade (Avoid repeated freezing and thawing). Stability: 12 months from date of despatch.

Shipping Lyophilized proteins are shipped at ambient temperature.

 Tel: 1-631-559-9269 1-516-512-3133

 Email: info@creative-biomart.com  Fax: 1-631-938-8127

 45-1 Ramsey Road, Shirley, NY 11967, USA

Reconstitution Lyophilized from sterile PBS, pH 7.4. Normally 5%-8% trehalose is added as protectants before lyophilization.

GENE INFORMATION

Gene Name [MASP2 mannan-binding lectin serine peptidase 2 \[Homo sapiens \(human\) \]](#)

Official Symbol [MASP2](#)

Synonyms MASP2; mannan-binding lectin serine peptidase 2; mannan binding lectin serine peptidase 1 pseudogene 1, mannan binding lectin serine protease 1 pseudogene 1, mannan binding lectin serine protease 2, MASP1P1; mannan-binding lectin serine protease 2; small MBL-associated protein; MBL-associated serine protease 2; MBL-associated plasma protein of 19 kD; mannan-binding lectin serine protease 1 pseudogene 1; mannose-binding protein-associated serine protease 2; mannan-binding lectin serine peptidase 1 pseudogene 1; sMAP; MAP19; MASP-2; MASP1P1

Gene ID [10747](#)

mRNA Refseq [NM_006610](#)

Protein Refseq [NP_006601](#)

MIM [605102](#)

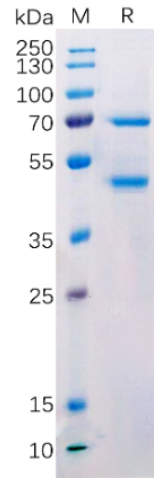
UniProt ID [O00187](#)

 Tel: 1-631-559-9269 1-516-512-3133

 Email: info@creative-biomart.com  Fax: 1-631-938-8127

 45-1 Ramsey Road, Shirley, NY 11967, USA

SDS-PAGE



 Tel: 1-631-559-9269 1-516-512-3133

 Email: info@creative-biomart.com  Fax: 1-631-938-8127

 45-1 Ramsey Road, Shirley, NY 11967, USA