

## Active Recombinant Human MASP2 protein, His-tagged

Cat. No. MASP2-5432H Lot. No. (See product label)

### SPECIFICATION

<b>Product Overview</b>	Recombinant Human MASP2 protein(O00187-1)(Gly288-Phe686), fused with C-terminal His tag, was expressed in E.coli.
<b>Species</b>	Human
<b>Source</b>	E.coli
<b>ProteinLength</b>	Gly288-Phe686
<b>Tag</b>	C-His
<b>Form</b>	Supplied as 0.22µm filtered solution in 20mM Tris, 200mM NaCl (pH 9.0).
<b>Bio-activity</b>	Immobilized Human MASP2, His Tag at 0.5µg/ml (100µl/Well). Dose response curve for Anti-MASP2 Antibody, hFc Tag with the EC50 of 5.0ng/ml determined by ELISA.
<b>Molecular Mass</b>	The protein has a predicted MW of 46.9 kDa. Due to Autocatalytic cleavage, the protein migrates to 18 kDa&25-30 kDa based on Tris-Bis PAGE result.
<b>Endotoxin</b>	Less than 1EU per µg by the LAL method.
<b>Purity</b>	> 95% as determined by Tris-Bis PAGE
<b>Storage</b>	Valid for 12 months from date of receipt when stored at -80°C; Recommend to aliquot the protein into smaller quantities for optimal storage. Please do not repeated freeze-

 Tel: 1-631-559-9269 1-516-512-3133

 Email: [info@creative-biomart.com](mailto:info@creative-biomart.com)  Fax: 1-631-938-8127

 45-1 Ramsey Road, Shirley, NY 11967, USA

thaw cycles.

**Concentration** Centrifuge tubes before opening.

**Reconstitution**

## GENE INFORMATION

**Gene Name** [MASP2 mannan-binding lectin serine peptidase 2 \[ Homo sapiens \]](#)

**Official Symbol** [MASP2](#)

**Synonyms** MASP2; mannan-binding lectin serine peptidase 2; mannan binding lectin serine peptidase 1 pseudogene 1 , mannan binding lectin serine protease 1 pseudogene 1 , mannan binding lectin serine protease 2 , MASP1P1; mannan-binding lectin serine protease 2; small MBL-associated protein; MBL-associated serine protease 2; MBL-associated plasma protein of 19 kD; mannan-binding lectin serine protease 1 pseudogene 1; mannose-binding protein-associated serine protease 2; mannan-binding lectin serine peptidase 1 pseudogene 1; sMAP; MAP19; MASP-2; MASP1P1;

**Gene ID** [10747](#)

**mRNA Refseq** [NM\\_006610](#)

**Protein Refseq** [NP\\_006601](#)

**MIM** [605102](#)

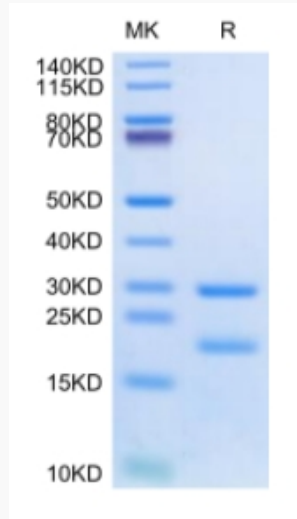
**UniProt ID** [O00187](#)

 Tel: 1-631-559-9269 1-516-512-3133

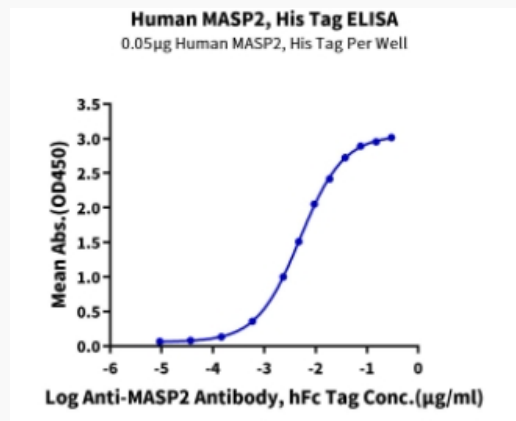
 Email: [info@creative-biomart.com](mailto:info@creative-biomart.com)  Fax: 1-631-938-8127

 45-1 Ramsey Road, Shirley, NY 11967, USA

**Tris-Bis PAGE**



**ELISA Data**



Tel: 1-631-559-9269 1-516-512-3133

Email: [info@creative-biomart.com](mailto:info@creative-biomart.com) Fax: 1-631-938-8127

45-1 Ramsey Road, Shirley, NY 11967, USA