

Recombinant Human MAST4 Protein, Myc/DDK-tagged, C13 and N15-labeled

Cat. No. MAST4-4360H Lot. No. (See product label)

SPECIFICATION

Product Overview	MAST4 MS Standard C13 and N15-labeled recombinant protein (NP_942123) with a C-terminal MYC/DDK tag, was expressed in HEK293 cells.
Species	Human
Source	HEK293
Description	This gene encodes a member of the microtubule-associated serine/threonine protein kinases. The proteins in this family contain a domain that gives the kinase the ability to determine its own scaffold to control the effects of their kinase activities. Alternative splicing results in multiple transcript variants encoding different isoforms.
Molecular Mass	25.5 kDa
AA Sequence	MGEKVSEAPEPVPRGCSGHGSRTPASALVAASSPGASSAESSSSGSETLSEEGEPG GFSREHQPPPPPLGGTLGARAPAAWAPASVLLERGVLLALPPPLPGGAVPPAPRGS SASQEEQDEELDHILSPPMPFRKCSNPDVASGPGKSLKYKRQLSEDRQLRRGSL GGALTGRYLLPNPVAGQAWPASAETSNLVRMRSQALGQSAPSLTASLKELSLPRRG SLIDSQKWNCLVKRPVCPNAGRTSPLGTRTRPLEQKLISEEDLAANDILDYKDDDDK V
Purity	> 80% as determined by SDS-PAGE and Coomassie blue staining
Stability	Stable for 3 months from receipt of products under proper storage and handling

 Tel: 1-631-559-9269 1-516-512-3133

 Email: info@creative-biomart.com  Fax: 1-631-938-8127

 45-1 Ramsey Road, Shirley, NY 11967, USA

conditions.

Storage Store at -80 centigrade. Avoid repeated freeze-thaw cycles.

Concentration 50 µg/mL as determined by BCA

Storage Buffer 100 mM glycine, 25 mM Tris-HCl, pH 7.3.

GENE INFORMATION

Gene Name MAST4 microtubule associated serine/threonine kinase family member 4 [Homo sapiens (human)]

Official Symbol MAST4

Synonyms MAST4; microtubule associated serine/threonine kinase family member 4; microtubule-associated serine/threonine-protein kinase 4; KIAA0303; FLJ16540; FLJ33039; DKFZp686N1467; DKFZp686E18148;

Gene ID 375449

mRNA Refseq NM_198828

Protein Refseq NP_942123

MIM 618002

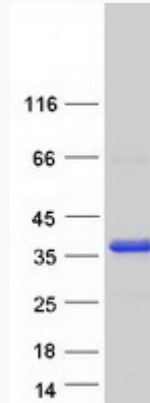
UniProt ID O15021

 Tel: 1-631-559-9269 1-516-512-3133

 Email: info@creative-biomart.com  Fax: 1-631-938-8127

 45-1 Ramsey Road, Shirley, NY 11967, USA

SDS-PAGE



 Tel: 1-631-559-9269 1-516-512-3133

 Email: info@creative-biomart.com  Fax: 1-631-938-8127

 45-1 Ramsey Road, Shirley, NY 11967, USA