

Active Recombinant Human MASTL Protein, GST-tagged

Cat. No. MASTL-156H Lot. No. (See product label)

SPECIFICATION

Product Overview	Recombinant Human EGFR MASTL fused with GST tag at N-terminal was expressed in Insect cells.
Species	Human
Source	Insect Cells
Description	Microtubule associated serine/threonine kinase-like (MASTL) belongs to the MAST family, AGC Ser/Thr protein kinase group. MASTL promotes mitotic progression and cell cycle reentry after DNA damage. Loss of MASTL leads to defects in chromosome condensation, separation, and other aspects of mitotic progression, which is primarily mediated by inhibiting PP2A/B55 δ . Overexpression of MASTL is correlated with cancer progression, poor patient survival, and tumor recurrence in various cancers.
Form	50mM sodium phosphate, pH 7.0, 300mM NaCl, 150mM imidazole, 0.1mM PMSF, 0.25mM DTT, 25% glycerol
Bio-activity	18 nmol/min/mg
Molecular Mass	150 kDa
Purity	> 70%
Applications	Kinase Assay, Western Blot

 Tel: 1-631-559-9269 1-516-512-3133

 Email: info@creative-biomart.com  Fax: 1-631-938-8127

 45-1 Ramsey Road, Shirley, NY 11967, USA

Stability	1 year at -70 centigrade from date of shipment.
Storage	Store product at -70centigrade. For optimal storage, aliquot target into smaller quantities after centrifugation and store at recommended temperature. For most favorable performance, avoid repeated handling and multiple freeze/thaw cycles.
Concentration	0.05 ug/ml

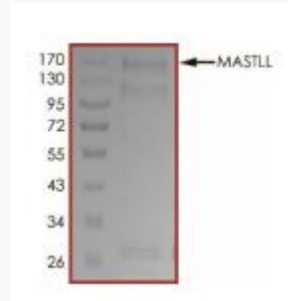
GENE INFORMATION

Gene Name	MASTL microtubule associated serine/threonine kinase-like [Homo sapiens]
Official Symbol	MASTL
Synonyms	MASTL; microtubule associated serine/threonine kinase-like; serine/threonine-protein kinase greatwall; FLJ14813; THC2; greatwall protein kinase; microtubule-associated serine/threonine-protein kinase-like; GW; GWL; hGWL; MAST-L; GREATWALL; RP11-85G18.2;
Gene ID	84930
mRNA Refseq	NM_001172303
Protein Refseq	NP_001165774
MIM	608221
UniProt ID	Q96GX5

 Tel: 1-631-559-9269 1-516-512-3133

 Email: info@creative-biomart.com  Fax: 1-631-938-8127

 45-1 Ramsey Road, Shirley, NY 11967, USA



 Tel: 1-631-559-9269 1-516-512-3133

 Email: info@creative-biomart.com  Fax: 1-631-938-8127

 45-1 Ramsey Road, Shirley, NY 11967, USA