

## Recombinant Human MAT2A protein, His-tagged

Cat. No. MAT2A-4710H Lot. No. (See product label)

### SPECIFICATION

<b>Product Overview</b>	Recombinant Human MAT2A protein(P31153)(1-395 aa), fused with N-terminal His tag, was expressed in Yeast.
<b>Species</b>	Human
<b>Source</b>	Yeast
<b>ProteinLength</b>	1-395 aa
<b>Form</b>	For liquid formulations, the standard storage buffer consists of a Tris or PBS based solution supplemented with 5-50% glycerol. When provided as lyophilized powder, the product undergoes freeze-drying from a Tris- or PBS-based formulation containing 6% trehalose, adjusted to pH 8.0 prior to the lyophilization process.
<b>Molecular Mass</b>	45.0 kDa
<b>AASequence</b>	MNGQLNGFHEAFIEEGTFLFTSESVEGEGHPDKICDQISDAVLDAHLQQDPDAKVACE TVAKTGMILLAGEITSRAAVDYQKVVREAVKHIGYDDSSKGFYKTCNVLVALEQQS PDIAQGVHLDRNEEDIGAGDQQLMFGYATDETEECMPLTIVLAHKLNAKLAELRRNG TLPWLRPDSKTQVTVQYMQDRGAVLPIRVHTIVISVQHDEEVCLDEM RDALKEKVIK AVVPAKYLDEDTIYHLQPSGRFVIGGPQGDAGLTGRKIIVDTYGGWGAHGGGAFSG KDYTKVDRSAAYAARWVAKSLVKGGLCRRVLVQVSYAIGVSHPLSISIFHYGTSQKS ERELLEIVKKNFDLRPGVIVRDLDLKKPIYQRTAAYGHFGRDSFPWEVPKCLKY
<b>Purity</b>	Greater than 90% as determined by SDS-PAGE.

 Tel: 1-631-559-9269 1-516-512-3133

 Email: [info@creative-biomart.com](mailto:info@creative-biomart.com)  Fax: 1-631-938-8127

 45-1 Ramsey Road, Shirley, NY 11967, USA

**Storage** Store at -20°C/-80°C upon receipt, aliquoting is necessary for mutiple use. Avoid repeated freeze-thaw cycles.

**Reconstitution** Please reconstitute protein indeionized sterile water to a concentration of 0.1-1.0 mg/mL. Aliquot for long-term storage at -80°C.

## GENE INFORMATION

**Gene Name** [MAT2A methionine adenosyltransferase II, alpha \[ Homo sapiens \]](#)

**Official Symbol** [MAT2A](#)

**Synonyms** MAT2A; methionine adenosyltransferase II, alpha; S-adenosylmethionine synthase isoform type-2; MATA2; MATII; SAMS2; MAT 2; MAT-II; adoMet synthase 2; adoMet synthetase 2; methionine adenosyltransferase 2;

**Gene ID** [4144](#)

**mRNA Refseq** [NM\\_005911](#)

**Protein Refseq** [NP\\_005902](#)

**MIM** [601468](#)

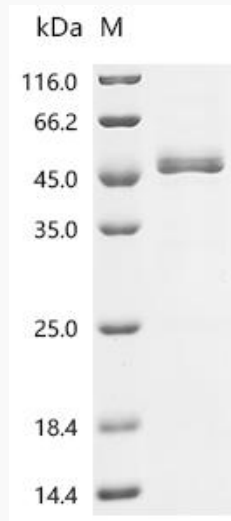
**UniProt ID** [P31153](#)

 Tel: 1-631-559-9269 1-516-512-3133

 Email: [info@creative-biomart.com](mailto:info@creative-biomart.com)  Fax: 1-631-938-8127

 45-1 Ramsey Road, Shirley, NY 11967, USA

**SDS-PAGE**



 Tel: 1-631-559-9269 1-516-512-3133

 Email: [info@creative-biomart.com](mailto:info@creative-biomart.com)  Fax: 1-631-938-8127

 45-1 Ramsey Road, Shirley, NY 11967, USA