

Recombinant Full Length Human MAT2A Protein, C-Flag-tagged

Cat. No. MAT2A-837HFL Lot. No. (See product label)

SPECIFICATION

Product Overview

Recombinant Full Length Human MAT2A Protein, fused to Flag-tag at C-terminus, was expressed in Mammalian cells.

Species

Human

Source

Mammalian Cells

Description

The protein encoded by this gene catalyzes the production of S-adenosylmethionine (AdoMet) from methionine and ATP. AdoMet is the key methyl donor in cellular processes.

Form

25 mM Tris HCl, pH 7.3, 100 mM glycine, 10% glycerol.

Molecular Mass

43.5 kDa

AA Sequence

MNGQLNGFHEAFIEEGTFLFTSES VEGEGHPDKICDQISDAVLDAHLQQDPDAKVACE
TVAKTGMILLAGE ITSRAAVDYQKVVREAVKHIGYDDSSKGFYKTCNVLVALEQQS
PDIAQGVHLDRNEEDIGAGDQGLMFG YATDETEECMPLTIVLAHKLNAKLAELRRN
GTLPWLRPDSKTQVTVQYMQDRGAVLPIRVHTIVISVQHD EEVCLDEM RDALKEKVI
KAVVPAKYLDEDTIYHLQPSGRFVIGGPQGDAGLTGRKIIVDTYGGWGAHGGG AFS
GKDYTKVDRSAAYAARWVAKSLVKGGLCRRVLVQVSYAIGVSHPLSISIFHYGTSQK
SERELLEIVK
KNFDLRPGVIVRDLDLKKPIYQR TAAYGHFGRDSFPWEVPKCLKYTRTRPLEQKLISE
EDLAANDILDYKDDDDKV

 Tel: 1-631-559-9269 1-516-512-3133

 Email: info@creative-biomart.com  Fax: 1-631-938-8127

 45-1 Ramsey Road, Shirley, NY 11967, USA

Purity	> 80% as determined by SDS-PAGE and Coomassie blue staining.
Stability	Stable for 12 months from the date of receipt of the product under proper storage and handling conditions. Avoid repeated freeze-thaw cycles.
Storage	Store at -80 centigrade.
Concentration	>50 ug/mL as determined by microplate BCA method.
Preparation	Recombinant protein was captured through anti-DDK affinity column followed by conventional chromatography steps.
Protein Pathways	Cysteine and methionine metabolism, Metabolic pathways, Selenoamino acid metabolism
Full Length	Full L.

GENE INFORMATION

Gene Name	MAT2A methionine adenosyltransferase 2A [Homo sapiens (human)]
Official Symbol	MAT2A
Synonyms	MATA2; MATII; SAMS2
Gene ID	4144
mRNA Refseq	NM_005911.6
Protein Refseq	NP_005902.1

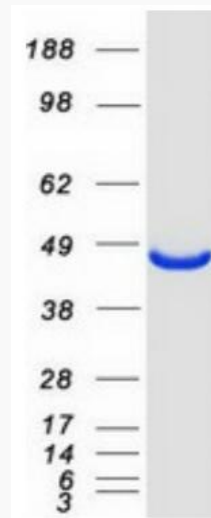
 Tel: 1-631-559-9269 1-516-512-3133

 Email: info@creative-biomart.com  Fax: 1-631-938-8127

 45-1 Ramsey Road, Shirley, NY 11967, USA

MIM 601468

UniProt ID P31153



Coomassie blue staining of purified MAT2A protein.

 Tel: 1-631-559-9269 1-516-512-3133

 Email: info@creative-biomart.com  Fax: 1-631-938-8127

 45-1 Ramsey Road, Shirley, NY 11967, USA