

## Recombinant Human MAT2B Protein, His-tagged

Cat. No. MAT2B-2423H Lot. No. (See product label)

### SPECIFICATION

|                         |  |
|-------------------------|--|
| <b>Product Overview</b> | Recombinant Human MAT2B Protein (Met1-His334) with a N-His tag was expressed in E. coli.   |
| <b>Species</b>          | Human  |
| <b>Source</b>           | E.coli   |
| <b>ProteinLength</b>    | Met1-His334  |
| <b>Description</b>      | The protein encoded by this gene belongs to the methionine adenosyltransferase (MAT) family. MAT catalyzes the biosynthesis of S-adenosylmethionine from methionine and ATP. This protein is the regulatory beta subunit of MAT. Alternative splicing results in multiple transcript variants encoding different isoforms. |
| <b>Form</b>             | Freeze-dried powder  |
| <b>Molecular Mass</b>   | Predicted Molecular Mass: 41.3 kDa<br>Accurate Molecular Mass: 43 kDa  |
| <b>Endotoxin</b>        | <1.0 EU per 1g (determined by the LAL method).   |
| <b>Purity</b>           | > 95%  |
| <b>Applications</b>     | Positive Control; Immunogen; SDS-PAGE; WB.   |

 Tel: 1-631-559-9269 1-516-512-3133

 Email: [info@creative-biomart.com](mailto:info@creative-biomart.com)  Fax: 1-631-938-8127

 45-1 Ramsey Road, Shirley, NY 11967, USA

|                       |  |
|-----------------------|--|
| <b>Stability</b>      | The thermal stability is described by the loss rate. The loss rate was determined by accelerated thermal degradation test, that is, incubate the protein at 37 centigrade for 48h, and no obvious degradation and precipitation were observed. The loss rate is less than 5% within the expiration date under appropriate storage condition. |
| <b>Storage</b>        | Avoid repeated freeze/thaw cycles. Store at 2-8 centigrade for one month. Aliquot and store at -80 centigrade for 12 months.   |
| <b>Storage Buffer</b> | 20mM Tris, 150mM NaCl, pH8.0, containing 1mM EDTA, 1mM DTT, 0.01% SKL, 5% Trehalose and Proclin300.  |
| <b>Reconstitution</b> | Reconstitute in 20mM Tris, 150mM NaCl (pH8.0) to a concentration of 0.1-1.0 mg/mL. Do not vortex.  |

## GENE INFORMATION

|                        |  |
|------------------------|--|
| <b>Gene Name</b>       | <a href="#">MAT2B methionine adenosyltransferase II, beta [ Homo sapiens (human) ]</a>   |
| <b>Official Symbol</b> | <a href="#">MAT2B</a>  |
| <b>Synonyms</b>        | MAT2B; methionine adenosyltransferase II, beta; methionine adenosyltransferase 2 subunit beta; MATIIbeta; SDR23E1; short chain dehydrogenase/reductase family 23E; member 1; MAT II beta; putative protein product of Nbla02999; dTDP-4-keto-6-deoxy-D-glucose 4-reductase; putative dTDP-4-keto-6-deoxy-D-glucose 4-reductase; short chain dehydrogenase/reductase family 23E, member 1; beta regulatory subunit of methionine adenosyltransferase; TGR; MAT-II; Nbla02999; MGC12237; |
| <b>Gene ID</b>         | <a href="#">27430</a>  |
| <b>mRNA Refseq</b>     | <a href="#">NM_013283</a>  |

 Tel: 1-631-559-9269 1-516-512-3133

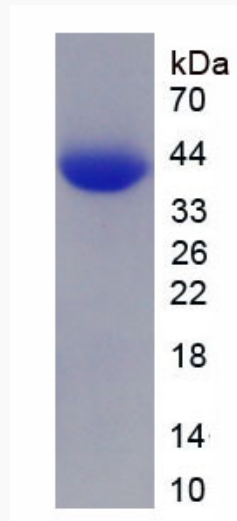
 Email: [info@creative-biomart.com](mailto:info@creative-biomart.com)  Fax: 1-631-938-8127

 45-1 Ramsey Road, Shirley, NY 11967, USA

**Protein Refseq** NP\_037415

**MIM** 605527

**UniProt ID** Q9NZL9



 Tel: 1-631-559-9269 1-516-512-3133

 Email: [info@creative-biomart.com](mailto:info@creative-biomart.com)  Fax: 1-631-938-8127

 45-1 Ramsey Road, Shirley, NY 11967, USA