

# Recombinant Human MATN2 Protein, Myc/DDK-tagged, C13 and N15-labeled

Cat. No. MATN2-6611H Lot. No. (See product label)

## SPECIFICATION

|                         |   |
|-------------------------|---|
| <b>Product Overview</b> | MATN2 MS Standard C13 and N15-labeled recombinant protein (NP_002371) with a C-terminal MYC/DDK tag, was expressed in HEK293 cells.   |
| <b>Species</b>          | Human   |
| <b>Source</b>           | HEK293  |
| <b>Description</b>      | This gene encodes a member of the von Willebrand factor A domain containing protein family. This family of proteins is thought to be involved in the formation of filamentous networks in the extracellular matrices of various tissues. This protein contains five von Willebrand factor A domains. The specific function of this gene has not yet been determined. Two transcript variants encoding different isoforms have been found for this gene. |
| <b>Molecular Mass</b>   | 106.9 kDa   |
| <b>AA Sequence</b>      | MEKMLAGCFLILGQIVLLPAEARERSRGRSISRGRHARTHHPQTALLESSCENKRAD<br>LVFIIDSSRSVNTHDYAKVKEFIVDILQFLDIGPDVTRVGLLQYGSTVKNEFSLKTFKR<br>KSEVERAVKRMRLSTGMTGLAIQYALNIAFSEAEGARPLRENVPRVIMIVTDGRP<br>QDSVAEVAAKARDTGILIFAIGVGGQVDFNTLKSIGSEPHEDHVFLVANFSQIETLTSVF<br>QKKLCTAHMCSTLEHNCAHFCINIPGSYVCRCKQGYILNSDQTTCRIQDLCAMEDHN<br>CEQLCVNVPGSFVCQCYSGYALAEDGKRCVAVDYCASENHGCEHECVNADGSYL<br>CQCHEGFALNPDEKTCTKIDYCASSNHGCQHECVNTDDSYSCHCLKGFTLNPDKKT                  |

 Tel: 1-631-559-9269 1-516-512-3133

 Email: [info@creative-biomart.com](mailto:info@creative-biomart.com)  Fax: 1-631-938-8127

 45-1 Ramsey Road, Shirley, NY 11967, USA

CRRINYCALNKPGEHECVNMEESYYCRCHRGYTLDPNGKTC SRVDHCAQQDHG  
 CEQLCLNTEDSFVCQCSEGLINEDLKTCSRVDYCLLSDHGCEYSCVNMDRSFACQ  
 CPEGHVLRS DGKTC AKLDSCALGDHGCEHSCVSSSEDSFVCQC FEGYILREDGKTC  
 RRKDVCAIDHGCEHICVNSDDSYTCECLEGFRLTEDGKRCRRKDVCKSTHHGCE  
 HICVNNGNSYICKCSEGFVLAEDGRRCKKCTEGPIDLVFVIDGSKSLGEENFEVVKQ  
 FVTGIIDSLTISPKAARVGLLQYSTQVHTEFTLRNFNSAKDMKKAVAHMKYMGK GSM  
 TGLALKHMFERSFTQGEGARPLSTRVPRAAIVFTDGRAQDDVSEWASKAKANGITM  
 YAVGVGKAIEEELQEIASEPTNKHLFYAEDFSTMDEISEKLLKKGICEALESDGRQDS  
 PAGELPKMVQQPTESEPVTINIQLLSCSNFAVQHRYLFEEDNLLRSTQKLSHSTKP  
 SGSPLEEKHDQCKCENLIMFQNLANEEVRKLTQRLEEMTQRMEALENRLRYRTRTR  
 PLEQKLISEEDLAANDILDYKDDDDKV

**Purity** > 80% as determined by SDS-PAGE and Coomassie blue staining

**Stability** Stable for 3 months from receipt of products under proper storage and handling conditions.

**Storage** Store at -80 centigrade. Avoid repeated freeze-thaw cycles.

**Concentration** 50 µg/mL as determined by BCA

**Storage Buffer** 100 mM glycine, 25 mM Tris-HCl, pH 7.3.

## GENE INFORMATION

**Gene Name** [MATN2 matrilin 2 \[ Homo sapiens \(human\) \]](#)

**Official Symbol** [MATN2](#)

**Synonyms** MATN2; matrilin 2; matrilin-2; testis tissue sperm-binding protein Li 94mP

 Tel: 1-631-559-9269 1-516-512-3133

 Email: [info@creative-biomart.com](mailto:info@creative-biomart.com)  Fax: 1-631-938-8127

 45-1 Ramsey Road, Shirley, NY 11967, USA

**Gene ID** 4147

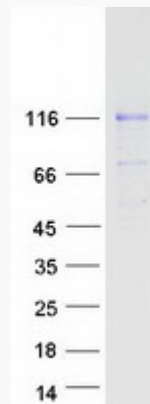
**mRNA Refseq** NM\_002380

**Protein Refseq** NP\_002371

**MIM** 602108

**UniProt ID** O00339

**SDS-PAGE**



 Tel: 1-631-559-9269 1-516-512-3133

 Email: [info@creative-biomart.com](mailto:info@creative-biomart.com)  Fax: 1-631-938-8127

 45-1 Ramsey Road, Shirley, NY 11967, USA