

Recombinant Human MATN3 Protein, MYC/DDK-tagged, C13 and N15-labeled

Cat. No. MATN3-266H Lot. No. (See product label)

SPECIFICATION

Product Overview

MATN3 MS Standard C13 and N15-labeled recombinant protein (NP_002372) with a C-terminal MYC/DDK tag, was expressed in HEK293 cells.

Species

Human

Source

HEK293

Description

This gene encodes a member of von Willebrand factor A domain containing protein family. This family of proteins is thought to be involved in the formation of filamentous networks in the extracellular matrices of various tissues. This protein contains two von Willebrand factor A domains; it is present in the cartilage extracellular matrix and has a role in the development and homeostasis of cartilage and bone. Mutations in this gene result in multiple epiphyseal dysplasia. [provided by RefSeq, Jul 2008]

Molecular Mass

52.82 kDa

AA Sequence

MPRPAPARRLPGLLLLLWPLLLLPSAAPDPVARPGFRRLETRGPGGSPGRRPSPAA
 PDGAPASGTSEPGRARGAGVCKSRPLDLVFIIDSSRSVRPLEFTKVKTFVSRIIDTLDI
 GPADTRVAVVNYASTVKIEFQLQAYTDKQSLKQAVGRITPLSTGTMSGLAIQTAMDE
 AFTVEAGAREPSSNIPKVAIIIVTDGRPQDQVNEVAARAQASGIELYAVGVDRADMAS
 LKMMASEPLEEHVIFYVETYGVIEKLSSRFQETFCALDPCVLGTHQCQHVCISDGEGK
 HHCECSQGYTLNADKKTCSALDRCALNTHGCEHICVNDRSGSYHCECYEGYTLNE
 DRKTCSAQDKCALGTHGCQHICVNDRTGSHHCECYEGYTLNADKKTCSVRDKCAL

 Tel: 1-631-559-9269 1-516-512-3133

 Email: info@creative-biomart.com  Fax: 1-631-938-8127

 45-1 Ramsey Road, Shirley, NY 11967, USA

GSHGCQHICVSDGAASYHCDCYPGYTLNEDKKTCSATEEARRLVSTEDACGCEATL
AFQDKVSSYLQRLNTKLDDILEKLNINEYGGIHRTRTRPLEQKLISEEDLAANDILDYK
DDDDKV

Purity > 80% as determined by SDS-PAGE and Coomassie blue staining

Stability Stable for 3 months from receipt of products under proper storage and handling conditions.

Storage Store at -80 centigrade. Avoid repeated freeze-thaw cycles.

Concentration 50 µg/mL as determined by BCA

Storage Buffer 100 mM glycine, 25 mM Tris-HCl, pH 7.3.

GENE INFORMATION

Gene Name [MATN3 matrilin 3 \[Homo sapiens \(human\) \]](#)

Official Symbol [MATN3](#)

Synonyms MATN3; matrilin 3; matrilin-3; EDM5; HOA; OS2; DIPOA; OADIP;

Gene ID [4148](#)

mRNA Refseq [NM_002381](#)

Protein Refseq [NP_002372](#)

MIM [602109](#)

 Tel: 1-631-559-9269 1-516-512-3133

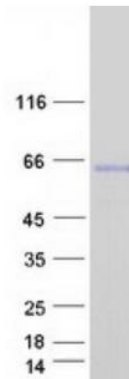
 Email: info@creative-biomart.com  Fax: 1-631-938-8127

 45-1 Ramsey Road, Shirley, NY 11967, USA

UniProt ID

O15232

SDS-PAGE



 Tel: 1-631-559-9269 1-516-512-3133

 Email: info@creative-biomart.com  Fax: 1-631-938-8127

 45-1 Ramsey Road, Shirley, NY 11967, USA