

## Recombinant Human MAX protein, His-tagged

Cat. No. MAX-3233H Lot. No. (See product label)

### SPECIFICATION

<b>Product Overview</b>	Recombinant Human MAX protein(P61244)(2-160aa), fused with N-terminal His tag, was expressed in E.coli.
<b>Species</b>	Human
<b>Source</b>	E.coli
<b>ProteinLength</b>	2-160aa
<b>Form</b>	If the delivery form is liquid, the default storage buffer is Tris/PBS-based buffer, 5%-50% glycerol. If the delivery form is lyophilized powder, the buffer before lyophilization is Tris/PBS-based buffer, 6% Trehalose, pH 8.0.
<b>Molecular Mass</b>	24.2 kDa
<b>Purity</b>	Greater than 90% as determined by SDS-PAGE.
<b>Storage</b>	Store at -20°C/-80°C upon receipt, aliquoting is necessary for mutiple use. Avoid repeated freeze-thaw cycles.
<b>Reconstitution</b>	We recommend that this vial be briefly centrifuged prior to opening to bring the contents to the bottom. Please reconstitute protein in deionized sterile water to a concentration of 0.1-1.0 mg/mL. We recommend to add 5-50% of glycerol (final concentration) and aliquot for long-term storage at -20°C/-80°C.

 Tel: 1-631-559-9269 1-516-512-3133

 Email: [info@creative-biomart.com](mailto:info@creative-biomart.com)  Fax: 1-631-938-8127

 45-1 Ramsey Road, Shirley, NY 11967, USA

**AA Sequence** SDNDDIEVESDEEQPRFQSAADKRAHHNALERKRRDHIKDSFHSLRDSVPSLQGEK  
ASRAQILDKATEYIQYMRRKNHHTHQDDIDDLKRQNALLEQQVRALEKARSSAQLQTN  
YPSSDNSLYTNAKGSTISAFDGGSDSSSESEPEEPQSRKKLRMEAS

## GENE INFORMATION

**Gene Name** [MAX MYC associated factor X \[ Homo sapiens \]](#)

**Official Symbol** [MAX](#)

**Synonyms** MAX; MYC associated factor X; MAX protein; protein max; bHLHd4; bHLHd5; bHLHd6; bHLHd7; bHLHd8; helix-loop-helix zipper protein; class D basic helix-loop-helix protein 4; orf1; MGC10775; MGC11225; MGC18164; MGC34679; MGC36767;

**Gene ID** [4149](#)

**mRNA Refseq** [NM\\_002382](#)

**Protein Refseq** [NP\\_002373](#)

**MIM** [154950](#)

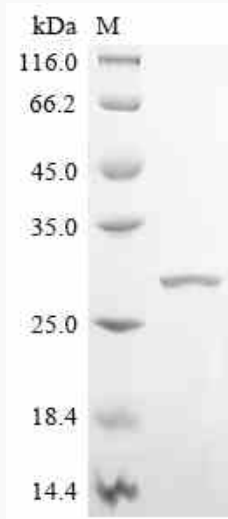
**UniProt ID** [P61244](#)

 Tel: 1-631-559-9269 1-516-512-3133

 Email: [info@creative-biomart.com](mailto:info@creative-biomart.com)  Fax: 1-631-938-8127

 45-1 Ramsey Road, Shirley, NY 11967, USA

**SDS-PAGE**



 Tel: 1-631-559-9269 1-516-512-3133

 Email: [info@creative-biomart.com](mailto:info@creative-biomart.com)  Fax: 1-631-938-8127

 45-1 Ramsey Road, Shirley, NY 11967, USA