

Recombinant Human MAX protein, His-tagged

Cat. No. MAX-3532H Lot. No. (See product label)

SPECIFICATION

Product Overview	Recombinant Human MAX protein(P61244)(2-160aa), fused with N-terminal His tag, was expressed in Insect cells.
Species	Human
Source	Insect cells
ProteinLength	2-160aa
Tag	N-His
Form	If the delivery form is liquid, the default storage buffer is Tris/PBS-based buffer, 5%-50% glycerol. If the delivery form is lyophilized powder, the buffer before lyophilization is Tris/PBS-based buffer, 6% Trehalose, pH 8.0.
Molecular Mass	20.6 kDa
Purity	Greater than 85% as determined by SDS-PAGE.
Storage	Store at -20°C/-80°C upon receipt, aliquoting is necessary for mutiple use. Avoid repeated freeze-thaw cycles.
Reconstitution	We recommend that this vial be briefly centrifuged prior to opening to bring the contents to the bottom. Please reconstitute protein in deionized sterile water to a concentration of 0.1-1.0 mg/mL. We recommend to add 5-50% of glycerol (final

 Tel: 1-631-559-9269 1-516-512-3133

 Email: info@creative-biomart.com  Fax: 1-631-938-8127

 45-1 Ramsey Road, Shirley, NY 11967, USA

concentration) and aliquot for long-term storage at -20°C/-80°C.

AA Sequence

SDNDDIEVESDEEQPRFQSAADKRAHHNALERKRRDHIKDSFHSLRDSVPSLQGEK
ASRAQILDKATEYIQYMRRKNHHTHQDIDDLKRQNALLEQQVRALEKARSSAQLQTN
YPSSDNSLYTNAKGSTISAFDGGSDSSSESEPEEPQSRKCLRMEAS

GENE INFORMATION

Gene Name

[MAX MYC associated factor X \[Homo sapiens \]](#)

Official Symbol

[MAX](#)

Synonyms

MAX; MYC associated factor X; MAX protein; protein max; bHLHd4; bHLHd5; bHLHd6; bHLHd7; bHLHd8; helix-loop-helix zipper protein; class D basic helix-loop-helix protein 4; orf1; MGC10775; MGC11225; MGC18164; MGC34679; MGC36767;

Gene ID

[4149](#)

mRNA Refseq

[NM_002382](#)

Protein Refseq

[NP_002373](#)

MIM

[154950](#)

UniProt ID

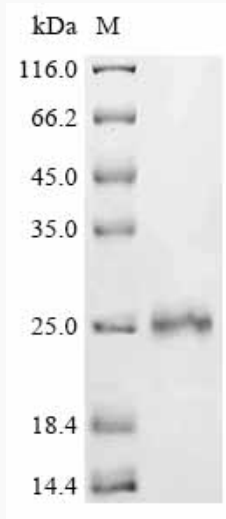
[P61244](#)

 Tel: 1-631-559-9269 1-516-512-3133

 Email: info@creative-biomart.com  Fax: 1-631-938-8127

 45-1 Ramsey Road, Shirley, NY 11967, USA

SDS-PAGE



 Tel: 1-631-559-9269 1-516-512-3133

 Email: info@creative-biomart.com  Fax: 1-631-938-8127

 45-1 Ramsey Road, Shirley, NY 11967, USA