

## Recombinant Human MAX Protein (Met1-Ser151), C-His tagged

Cat. No. MAX-4501H Lot. No. (See product label)

### SPECIFICATION

<b>Product Overview</b>	Recombinant human MAX (Met1-Ser151) fused with the C-terminal His tag was expressed in E. coli.
<b>Species</b>	Human
<b>Source</b>	E.coli
<b>ProteinLength</b>	Met1-Ser151
<b>Form</b>	Lyophilized powder/frozen liquid
<b>Molecular Mass</b>	16.61 kDa
<b>Purity</b>	>90% as determined by SDS-PAGE.
<b>Notes</b>	For research use only.
<b>Storage</b>	Use a manual defrost freezer and avoid repeated freeze thaw cycles. Store at 2 to 8 centigrade for one week. Store at -20 to -80 centigrade for twelve months from the date of receipt.
<b>Storage Buffer</b>	Supplied as solution form in PBS or lyophilized from PBS.
<b>Reconstitution</b>	Reconstitute in sterile water for a stock solution.

 Tel: 1-631-559-9269 1-516-512-3133

 Email: [info@creative-biomart.com](mailto:info@creative-biomart.com)  Fax: 1-631-938-8127

 45-1 Ramsey Road, Shirley, NY 11967, USA

**Shipping** They are shipped out with dry ice/blue ice unless customers require otherwise.

## GENE INFORMATION

**Gene Name** MAX MYC associated factor X [ Homo sapiens (human) ]

**Official Symbol** MAX

**Synonyms** MAX; MYC associated factor X; MAX protein; protein max; bHLHd4; bHLHd5; bHLHd6; bHLHd7; bHLHd8; helix-loop-helix zipper protein; class D basic helix-loop-helix protein 4; orf1; MGC10775; MGC11225; MGC18164; MGC34679; MGC36767;

**Gene ID** 4149

**mRNA Refseq** NM\_002382

**Protein Refseq** NP\_002373

**MIM** 154950

**UniProt ID** P61244

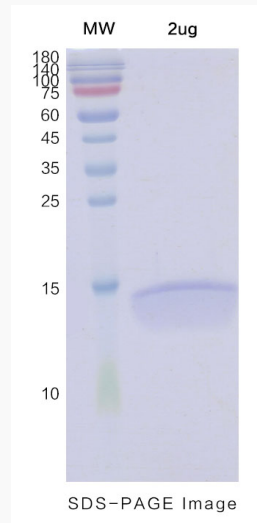
 Tel: 1-631-559-9269 1-516-512-3133

 Email: [info@creative-biomart.com](mailto:info@creative-biomart.com)  Fax: 1-631-938-8127

 45-1 Ramsey Road, Shirley, NY 11967, USA



SDS-PAGE



Tel: 1-631-559-9269 1-516-512-3133

Email: [info@creative-biomart.com](mailto:info@creative-biomart.com) Fax: 1-631-938-8127

45-1 Ramsey Road, Shirley, NY 11967, USA