

## Recombinant Human MAX Protein (Ser2-Ser160), N-GST tagged

Cat. No. MAX-4503H    Lot. No. (See product label)

### SPECIFICATION

<b>Product Overview</b>	Recombinant human MAX (Ser2-Ser160) fused with the N-GST tag was expressed in E. coli.
<b>Species</b>	Human
<b>Source</b>	E.coli
<b>ProteinLength</b>	Ser2-Ser160
<b>Form</b>	Lyophilized powder/frozen liquid
<b>Molecular Mass</b>	44.98 kDa
<b>Purity</b>	>90% as determined by SDS-PAGE.
<b>Notes</b>	For research use only.
<b>Storage</b>	Use a manual defrost freezer and avoid repeated freeze thaw cycles. Store at 2 to 8 centigrade for one week. Store at -20 to -80 centigrade for twelve months from the date of receipt.
<b>Storage Buffer</b>	0.01M PBS, pH 7.4, 0.02% NLS
<b>Reconstitution</b>	Reconstitute in sterile water for a stock solution.

 Tel: 1-631-559-9269    1-516-512-3133

 Email: [info@creative-biomart.com](mailto:info@creative-biomart.com)     Fax: 1-631-938-8127

 45-1 Ramsey Road, Shirley, NY 11967, USA

**Shipping** They are shipped out with dry ice/blue ice unless customers require otherwise.

## GENE INFORMATION

**Gene Name** MAX MYC associated factor X [ Homo sapiens (human) ]

**Official Symbol** MAX

**Synonyms** MAX; MYC associated factor X; MAX protein; protein max; bHLHd4; bHLHd5; bHLHd6; bHLHd7; bHLHd8; helix-loop-helix zipper protein; class D basic helix-loop-helix protein 4; orf1; MGC10775; MGC11225; MGC18164; MGC34679; MGC36767;

**Gene ID** 4149

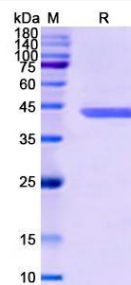
**mRNA Refseq** NM\_002382

**Protein Refseq** NP\_002373

**MIM** 154950

**UniProt ID** P61244

### SDS-PAGE



 Tel: 1-631-559-9269 1-516-512-3133

 Email: [info@creative-biomart.com](mailto:info@creative-biomart.com)  Fax: 1-631-938-8127

 45-1 Ramsey Road, Shirley, NY 11967, USA