

Recombinant Human MAX Protein, Myc/DDK-tagged, C13 and N15-labeled

Cat. No. MAX-5911H **Lot. No.** (See product label)

SPECIFICATION

Product Overview	MAX MS Standard C13 and N15-labeled recombinant protein (NP_660088) with a C-terminal MYC/DDK tag, was expressed in HEK293 cells.
Species	Human
Source	HEK293
Description	The protein encoded by this gene is a member of the basic helix-loop-helix leucine zipper (bHLHZ) family of transcription factors. It is able to form homodimers and heterodimers with other family members, which include Mad, Mxi1 and Myc. Myc is an oncoprotein implicated in cell proliferation, differentiation and apoptosis. The homodimers and heterodimers compete for a common DNA target site (the E box) and rearrangement among these dimer forms provides a complex system of transcriptional regulation. Mutations of this gene have been reported to be associated with hereditary pheochromocytoma. A pseudogene of this gene is located on the long arm of chromosome 7. Alternative splicing results in multiple transcript variants.
Molecular Mass	11.9 kDa
AA Sequence	MSDNDDIEVESDEEQPRFQSAADKRAHHNALERKRRDHIKDSFHSLRDSVPSLQGE KPQASRAQILDKATEYIQYMRRKNHTHQQDIDDLKRQNALLEQQGESESTRTRPLE QKLISEEDLAANDILDYKDDDDKV
Purity	> 80% as determined by SDS-PAGE and Coomassie blue staining

 Tel: 1-631-559-9269 1-516-512-3133

 Email: info@creative-biomart.com  Fax: 1-631-938-8127

 45-1 Ramsey Road, Shirley, NY 11967, USA

Stability	Stable for 3 months from receipt of products under proper storage and handling conditions.
Storage	Store at -80 centigrade. Avoid repeated freeze-thaw cycles.
Concentration	50 µg/mL as determined by BCA
Storage Buffer	100 mM glycine, 25 mM Tris-HCl, pH 7.3.

GENE INFORMATION

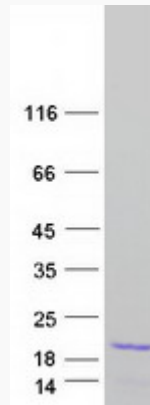
Gene Name	MAX MYC associated factor X [Homo sapiens (human)]
Official Symbol	MAX
Synonyms	MAX; MYC associated factor X; MAX protein; protein max; bHLHd4; bHLHd5; bHLHd6; bHLHd7; bHLHd8; helix-loop-helix zipper protein; class D basic helix-loop-helix protein 4; orf1; MGC10775; MGC11225; MGC18164; MGC34679; MGC36767;
Gene ID	4149
mRNA Refseq	NM_145113
Protein Refseq	NP_660088
MIM	154950
UniProt ID	P61244

 Tel: 1-631-559-9269 1-516-512-3133

 Email: info@creative-biomart.com  Fax: 1-631-938-8127

 45-1 Ramsey Road, Shirley, NY 11967, USA

SDS-PAGE



 Tel: 1-631-559-9269 1-516-512-3133

 Email: info@creative-biomart.com  Fax: 1-631-938-8127

 45-1 Ramsey Road, Shirley, NY 11967, USA