

Recombinant Human MB protein(21-100 aa), C-His-tagged

Cat. No. MB-2522H Lot. No. (See product label)


SPECIFICATION

| | |
|-------------------------|---|
| Product Overview | Recombinant Human MB protein(P02144)(21-100 aa), fused with C-terminal His tag, was expressed in E. coli. |
| Species | Human |
| Source | E.coli |
| ProteinLength | 21-100 aa |
| Form | 0.15 M Phosphate buffered saline |
| Molecular Mass | 11 kDa |
| Storage | Shipped on dry ice. Avoid repeated freeze-thaw cycles. Upon receipt, 2 days when stored at 2 to 8 °C after thawing. Up to 12 months when aliquoted and stored at -20 to -80°C. |
| Reconstitution | It is recommended that sterile water be added to the vial to prepare a stock solution of 0.2 ug/ul. Centrifuge the vial at 4°C before opening to recover the entire contents. |
| AA Sequence | DIPGHGQEV LIRLFK GHPETLEK FDKFKHLKSEDEM KASEDLKKHGATVLTALGGILK KKGHHEAEIKPLAQSHATKHKI |

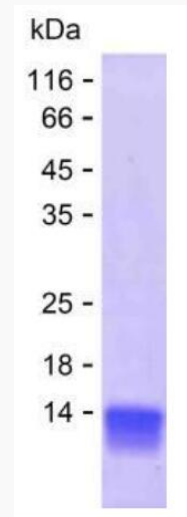
GENE INFORMATION


 Tel: 1-631-559-9269 1-516-512-3133

 Email: info@creative-biomart.com  Fax: 1-631-938-8127

 45-1 Ramsey Road, Shirley, NY 11967, USA

| | |
|------------------------|---------------------------------|
| Gene Name | MB myoglobin [Homo sapiens] |
| Official Symbol | MB |
| Synonyms | MB; myoglobin; PVALB; MGC13548; |
| Gene ID | 4151 |
| mRNA Refseq | NM_005368 |
| Protein Refseq | NP_005359 |
| MIM | 160000 |
| UniProt ID | P02144 |

SDS-PAGE

 Tel: 1-631-559-9269 1-516-512-3133

 Email: info@creative-biomart.com  Fax: 1-631-938-8127

 45-1 Ramsey Road, Shirley, NY 11967, USA