

## Recombinant Sperm Whale MB Protein, His-tagged

Cat. No. MB-72S Lot. No. (See product label)

### SPECIFICATION

<b>Product Overview</b>	Recombinant Sperm Whale MB Protein, fused to His-tag, was expressed in E. coli.
<b>Species</b>	Sperm Whale
<b>Source</b>	E.coli
<b>Description</b>	myoglobin
<b>Form</b>	PBS, pH7.4.
<b>Molecular Mass</b>	18 kDa
<b>AA Sequence</b>	MHHHHHHVLSEGEWQLVLHVWAKVEADVAGHGQDILIRLFKSHPETLEKFDRFKHL KTEAEMKASEDLKKHGVTVLTA LGAILKKKGHHEAELKPLAQSHATKHKIPIKYLEFIS EAIHVLSRHPGDFGADAQGAMNKALELFRKDIAAKYKELGYQG
<b>Purity</b>	95%
<b>Storage</b>	Store it under sterile conditions at -20 to -80 centigrade. It is recommended that the protein be aliquoted for optimal storage. Avoid repeated freeze-thaw cycles.
<b>Concentration</b>	1 mg/ml

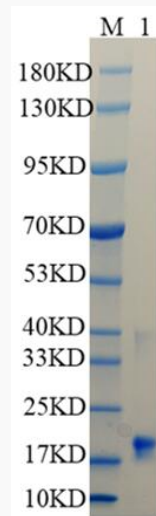
### GENE INFORMATION

 Tel: 1-631-559-9269 1-516-512-3133

 Email: [info@creative-biomart.com](mailto:info@creative-biomart.com)  Fax: 1-631-938-8127

 45-1 Ramsey Road, Shirley, NY 11967, USA

<b>Gene Name</b>	MB myoglobin [ <i>Physeter catodon</i> (sperm whale) ]
<b>Official Symbol</b>	MB
<b>Gene ID</b>	102975021
<b>mRNA Refseq</b>	NM_001290722
<b>Protein Refseq</b>	NP_001277651
<b>UniProt ID</b>	P02185

**SDS-PAGE**

Reducing 12% SDS-PAGE analysis profile of purified MB (CBB stained).

 Tel: 1-631-559-9269 1-516-512-3133

 Email: [info@creative-biomart.com](mailto:info@creative-biomart.com)  Fax: 1-631-938-8127

 45-1 Ramsey Road, Shirley, NY 11967, USA