

Recombinant Human mannose binding lectin 2 Protein, His&Flag tagged

Cat. No. MBL2-075H **Lot. No.** (See product label)

SPECIFICATION

Product Overview	Recombinant human MBL2 protein (P11226) (Ala 108-Ile 248) with both His and Flag tag at the C-terminus was expressed in HEK293.
Species	Human
Source	HEK293
ProteinLength	108-248aa
Description	Calcium-dependent lectin involved in innate immune defense. Binds mannose, fucose and N-acetylglucosamine on different microorganisms and activates the lectin complement pathway. Binds to late apoptotic cells, as well as to apoptotic blebs and to necrotic cells, but not to early apoptotic cells, facilitating their uptake by macrophages. May bind DNA. Upon SARS coronavirus-2/SARS-CoV-2 infection, activates the complement lectin pathway which leads to the inhibition SARS-CoV-2 infection and a reduction of the induced inflammatory response.
Tag	C-His&Flag
Molecular Mass	16 kDa
Endotoxin	Less than 1.0 EU/μg by the LAL method.
Purity	>95% as determined by SDS-PAGE.

 Tel: 1-631-559-9269 1-516-512-3133

 Email: info@creative-biomart.com  Fax: 1-631-938-8127

 45-1 Ramsey Road, Shirley, NY 11967, USA

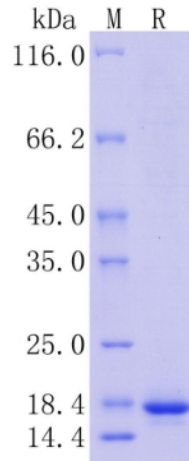
Storage	Please avoid repeated freeze-thaw cycles. Samples are stable for up to twelve months from date of receipt at -20 to -80 centigrade. It is recommended that aliquot the reconstituted solution to minimize freeze-thaw cycles.
Storage Buffer	Lyophilized from a 0.2 µm filtered solution of PBS, pH7.4, 5% Trehalose, 5% mannitol.
Reconstitution	Reconstitute at 250 µg/mL in sterile water.
GENE INFORMATION	
Gene Name	MBL2 mannose binding lectin 2 [Homo sapiens (human)]
Official Symbol	MBL2
Synonyms	MBL2; mannose-binding lectin (protein C) 2, soluble; mannose binding lectin (protein C) 2, soluble (opsonic defect), MBL; mannose-binding protein C; COLEC1; collectin-1; mannan-binding lectin; mannose-binding lectin 2, soluble (opsonic defect); mannose-binding lectin (protein C) 2, soluble (opsonic defect); MBL; MBP; MBP1; MBL2D; MBP-C; HSMBPC; MGC116832; MGC116833;
Gene ID	4153
mRNA Refseq	NM_000242
Protein Refseq	NP_000233
MIM	154545
UniProt ID	P11226

 Tel: 1-631-559-9269 1-516-512-3133

 Email: info@creative-biomart.com  Fax: 1-631-938-8127

 45-1 Ramsey Road, Shirley, NY 11967, USA

**Protein on SDS-
PAGE under
reducing (R)
condition.**



 Tel: 1-631-559-9269 1-516-512-3133

 Email: info@creative-biomart.com  Fax: 1-631-938-8127

 45-1 Ramsey Road, Shirley, NY 11967, USA