

Recombinant Bovine MBL2 Protein (21-249 aa), His-tagged

Cat. No. MBL2-1452B **Lot. No.** (See product label)

SPECIFICATION

Product Overview Recombinant Bovine MBL2 Protein (21-249 aa) is produced by Yeast expression system. This protein is fused with a 6xHis tag at the N-terminal. Protein Description: Full Length of Mature Protein.

Species Bovine

Source Yeast

ProteinLength 21-249 aa

Description Calcium-dependent lectin involved in innate immune defense. Binds mannose, fucose and N-acetylglucosamine on different microorganisms and activates the lectin complement pathway. Binds to late apoptotic cells, as well as to apoptotic blebs and to necrotic cells, but not to early apoptotic cells, facilitating their uptake by macrophages.

Form Tris-based buffer, 50% glycerol

Molecular Mass 26.4 kDa

AA Sequence DTETENCENIRKTCPIACGPPGINGIPGKDGRDGAKEKGEPPGQGLRGSQGPPGK
MGPQGTPGIPGPIGPIGQKGDGENMGDYIRLATSERATLQSELNQIKNWLIFSLGK
RVGKKAFFTNGKKMPFNEVKTLCAQFQGRVATPMNAEENRALKDLVTEEAFLGITD
QETEGKFVDLTGKGVTYQNWNDGEPNNASPGEHCVTLTSDGTWNDIACSASFLTV
CEFSL

 Tel: 1-631-559-9269 1-516-512-3133

 Email: info@creative-biomart.com  Fax: 1-631-938-8127

 45-1 Ramsey Road, Shirley, NY 11967, USA

Purity	> 90% as determined by SDS-PAGE.
Notes	Repeated freezing and thawing is not recommended. Store working aliquots at 4 centigrade for up to one week.
Storage	The shelf life is related to many factors, storage state, buffer ingredients, storage temperature and the stability of the protein itself. Generally, the shelf life of liquid form is 6 months at -20 centigrade/-80 centigrade. The shelf life of lyophilized form is 12 months at -20 centigrade/-80 centigrade.
Concentration	A hardcopy of COA with reconstitution instruction is sent along with the products.

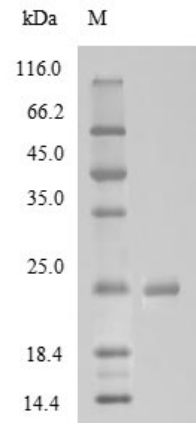
GENE INFORMATION

Gene Name	MBL2 mannose binding lectin 2 [Bos taurus (cattle)]
Official Symbol	MBL2
Synonyms	MBL;
Gene ID	281297
mRNA Refseq	NM_174107.2
Protein Refseq	NP_776532
UniProt ID	O02659

 Tel: 1-631-559-9269 1-516-512-3133

 Email: info@creative-biomart.com  Fax: 1-631-938-8127

 45-1 Ramsey Road, Shirley, NY 11967, USA



(Tris-Glycine gel) Discontinuous SDS-PAGE (reduced) with 5% enrichment gel and 15% separation gel.

 Tel: 1-631-559-9269 1-516-512-3133

 Email: info@creative-biomart.com  Fax: 1-631-938-8127

 45-1 Ramsey Road, Shirley, NY 11967, USA