

## Recombinant Human MBL2 Protein (Glu21-Ile248), C-His tagged

Cat. No. MBL2-4509H    Lot. No. (See product label)

### SPECIFICATION

<b>Product Overview</b>	Recombinant human MBL2 (Glu21-Ile248) fused with the C-terminal His tag was expressed in Mammalian cells.
<b>Species</b>	Human
<b>Source</b>	Mammalian Cells
<b>ProteinLength</b>	Glu21-Ile248
<b>Form</b>	Lyophilized powder/frozen liquid
<b>Molecular Mass</b>	25.08 kDa
<b>Purity</b>	>90% as determined by SDS-PAGE.
<b>Notes</b>	For research use only.
<b>Storage</b>	Use a manual defrost freezer and avoid repeated freeze thaw cycles. Store at 2 to 8 centigrade for one week. Store at -20 to -80 centigrade for twelve months from the date of receipt.
<b>Storage Buffer</b>	Supplied as solution form in PBS or lyophilized from PBS.
<b>Reconstitution</b>	Reconstitute in sterile water for a stock solution.

 Tel: 1-631-559-9269    1-516-512-3133

 Email: [info@creative-biomart.com](mailto:info@creative-biomart.com)     Fax: 1-631-938-8127

 45-1 Ramsey Road, Shirley, NY 11967, USA

**Shipping** They are shipped out with dry ice/blue ice unless customers require otherwise.

## GENE INFORMATION

**Gene Name** MBL2 mannose-binding lectin (protein C) 2, soluble [ Homo sapiens (human) ]

**Official Symbol** MBL2

**Synonyms** MBL2; mannose-binding lectin (protein C) 2, soluble; mannose binding lectin (protein C) 2, soluble (opsonic defect), MBL; mannose-binding protein C; COLEC1; collectin-1; mannan-binding lectin; mannose-binding lectin 2, soluble (opsonic defect); mannose-binding lectin (protein C) 2, soluble (opsonic defect); MBL; MBP; MBP1; MBL2D; MBP-C; HSMBPC; MGC116832; MGC116833;

**Gene ID** 4153

**mRNA Refseq** NM\_000242

**Protein Refseq** NP\_000233

**MIM** 154545

**UniProt ID** P11226

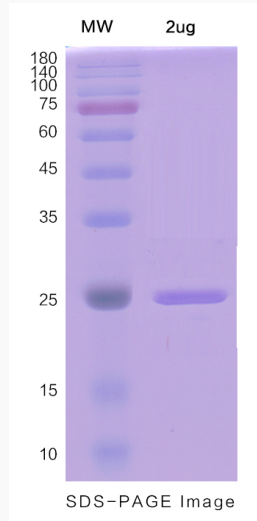
 Tel: 1-631-559-9269 1-516-512-3133

 Email: [info@creative-biomart.com](mailto:info@creative-biomart.com)  Fax: 1-631-938-8127

 45-1 Ramsey Road, Shirley, NY 11967, USA



**SDS-PAGE**



Tel: 1-631-559-9269 1-516-512-3133

Email: [info@creative-biomart.com](mailto:info@creative-biomart.com) Fax: 1-631-938-8127

45-1 Ramsey Road, Shirley, NY 11967, USA