

Recombinant Human MBL2 Protein (Glu21-Ile248), N-His tagged

Cat. No. MBL2-4511H **Lot. No.** (See product label)

SPECIFICATION

Product Overview	Recombinant human MBL2 / MBP-C (Glu21-Ile248) fused with the N-His tag was expressed in E. coli.
Species	Human
Source	E.coli
ProteinLength	Glu21-Ile248
Form	Lyophilized powder/frozen liquid
Molecular Mass	26.33 kDa
Purity	>90% as determined by SDS-PAGE.
Notes	For research use only.
Storage	Use a manual defrost freezer and avoid repeated freeze thaw cycles. Store at 2 to 8 centigrade for one week. Store at -20 to -80 centigrade for twelve months from the date of receipt.
Storage Buffer	0.01M PBS, pH 7.4, 0.02% NLS
Reconstitution	Reconstitute in sterile water for a stock solution.

 Tel: 1-631-559-9269 1-516-512-3133

 Email: info@creative-biomart.com  Fax: 1-631-938-8127

 45-1 Ramsey Road, Shirley, NY 11967, USA

Shipping They are shipped out with dry ice/blue ice unless customers require otherwise.

GENE INFORMATION

Gene Name MBL2 mannose-binding lectin (protein C) 2, soluble [Homo sapiens (human)]

Official Symbol MBL2

Synonyms MBL2; mannose-binding lectin (protein C) 2, soluble; mannose binding lectin (protein C) 2, soluble (opsonic defect), MBL; mannose-binding protein C; COLEC1; collectin-1; mannan-binding lectin; mannose-binding lectin 2, soluble (opsonic defect); mannose-binding lectin (protein C) 2, soluble (opsonic defect); MBL; MBP; MBP1; MBL2D; MBP-C; HSMBPC; MGC116832; MGC116833;

Gene ID 4153

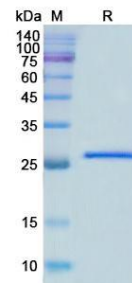
mRNA Refseq NM_000242

Protein Refseq NP_000233

MIM 154545

UniProt ID P11226

SDS-PAGE



 Tel: 1-631-559-9269 1-516-512-3133

 Email: info@creative-biomart.com  Fax: 1-631-938-8127

 45-1 Ramsey Road, Shirley, NY 11967, USA