

Recombinant Human MBL2 protein, His & GST-tagged

Cat. No. MBL2-575H **Lot. No.** (See product label)

SPECIFICATION

Product Overview	Recombinant Human MBL2 (P11226) aa. (Leu130~Ile248) fused with His & GST tag was produced in E. coli cells.
Species	Human
Source	E.coli
ProteinLength	Leu130~Ile248
Description	This gene encodes the soluble mannose-binding lectin or mannose-binding protein found in serum. The protein encoded belongs to the collectin family and is an important element in the innate immune system. The protein recognizes mannose and N-acetylglucosamine on many microorganisms, and is capable of activating the classical complement pathway. Deficiencies of this gene have been associated with susceptibility to autoimmune and infectious diseases.
Form	Freeze-dried powder
Molecular Mass	Predicted Molecular Mass: 43kDa; Accurate Molecular Mass: 43kDa as determined by SDS-PAGE reducing conditions.
Endotoxin	<1.0EU per 1ug (determined by the LAL method)
Purity	>98%

 Tel: 1-631-559-9269 1-516-512-3133

 Email: info@creative-biomart.com  Fax: 1-631-938-8127

 45-1 Ramsey Road, Shirley, NY 11967, USA

Characteristic	Isoelectric point is 5.8.
Applications	Cell culture; Activity Assays; In vivo assays.
Stability	The thermal stability is described by the loss rate. The loss rate was determined by accelerated thermal degradation test, that is, incubate the protein at 37°C for 48h, and no obvious degradation and precipitation were observed. The loss rate is less than 5% within the expiration date under appropriate storage condition.
Storage	Avoid repeated freeze/thaw cycles. Store at 2-8°C for one month. Aliquot and store at -80°C for 12 months.
Storage buffer	20mM Tris, 150mM NaCl, pH8.0, containing 1mM EDTA, 1mM DTT, 0.01% sarcosyl, 5% Trehalose and Proclin300.
Reconstitution	Reconstitute in 20mM Tris, 150mM NaCl (pH8.0) to a concentration of 0.1-1.0 mg/mL. Do not vortex

GENE INFORMATION

Gene Name	MBL2 mannose binding lectin 2 [Homo sapiens (human)]
Official Symbol	MBL2
Synonyms	MBL2; mannose binding lectin 2; MBL; MBP; MBP1; MBPD; MBL2D; MBP-C; COLEC1; HSMBPC; mannose-binding protein C; collectin-1; mannan-binding lectin; mannose-binding lectin (protein C) 2, soluble (opsonic defect); mannose-binding lectin 2, soluble (opsonic defect)
Gene ID	4153

 Tel: 1-631-559-9269 1-516-512-3133

 Email: info@creative-biomart.com  Fax: 1-631-938-8127

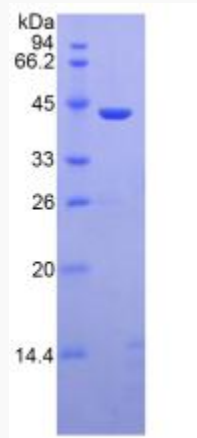
 45-1 Ramsey Road, Shirley, NY 11967, USA

mRNA Refseq [NM_000242.2](#)

Protein Refseq [NP_000233.1](#)

UniProt ID [P11226](#)

SDS-PAGE



 Tel: 1-631-559-9269 1-516-512-3133

 Email: info@creative-biomart.com  Fax: 1-631-938-8127

 45-1 Ramsey Road, Shirley, NY 11967, USA