

Recombinant Human MBNL1 protein, His/SUMO-tagged

Cat. No. MBNL1-6556H Lot. No. (See product label)

SPECIFICATION

Product Overview	Recombinant Human MBNL1 protein (1-382aa), fused to His/SUMO-tag at N-terminus, was expressed in E.coli.
Species	Human
Source	E.coli
ProteinLength	382
Description	Mediates pre-mRNA alternative splicing regulation. Acts either as activator or repressor of splicing on specific pre-mRNA targets. Inhibits cardiac troponin-T (TNNT2) pre-mRNA exon inclusion but induces insulin receptor (IR) pre-mRNA exon inclusion in muscle. Antagonizes the alternative splicing activity pattern of CELF proteins. Regulates the TNNT2 exon 5 skipping through competition with U2AF2. Inhibits the formation of the spliceosome A complex on intron 4 of TNNT2 pre-mRNA. Binds to the stem-loop structure within the polypyrimidine tract of TNNT2 intron 4 during spliceosome assembly. Binds to the 5'-YGCU(U/G)Y-3'consensus sequence. Binds to the IR RNA. Binds to expanded CUG repeat RNA, which folds into a hairpin structure containing GC base pairs and bulged, unpaired U residues.
Form	Liquid or Lyophilized powder. If the delivery form is liquid, the default storage buffer is Tris/PBS-based buffer, 5%-50% glycerol; If the delivery form is lyophilized powder, the buffer before lyophilization is Tris/PBS-based buffer, 6% Trehalose, pH 8.0.
Molecular Mass	57.0 kDa

 Tel: 1-631-559-9269 1-516-512-3133

 Email: info@creative-biomart.com  Fax: 1-631-938-8127

 45-1 Ramsey Road, Shirley, NY 11967, USA

AA Sequence

MAVSVTPIRDTKWLTLEVCREFQRGTCSRPDTECKFAHPSKSCQVENGRVIACFDS
 LKGRCSRENCKYLHPPPHLKTQLEINGRNLIQQKNMAMLAQQMQLANAMMPGAP
 LQPVPMFSVAPSLATNASAAAFNPYLGPVSPSLVPAEILPTAPMLVTGNPGVPVPA
 AAAAAQKLMRTDRLEVCREYQRGNCNRGENDCRFAHPADSTMIDTNDNTVTVCM
 YIKGRCSREKCKYFHPPAHLQAKIKAAQYQVNQAAAAQAAATAAAMGIPQAVLPPLP
 KRPALEKTNGATAVFNTGIFQYQQALANMQLQQHTAFLPPGSILCMTPATSVVPMV
 HGATPATVSAATTSATSVPFAATATANQIPIISAEHLTSHKYVTQM

Purity Greater than 90% as determined by SDS-PAGE.

Storage Store at -20 centigrade upon receipt, aliquoting is necessary for multiple use. Avoid repeated freeze-thaw cycles.

Reconstitution We recommend that this vial be briefly centrifuged prior to opening to bring the contents to the bottom. Please reconstitute protein in deionized sterile water to a concentration of 0.1-1.0 mg/mL. We recommend to add 5-50% of glycerol (final concentration) and aliquot for long-term storage at -20 centigrade/-80 centigrade. Our default final concentration of glycerol is 50%. Customers could use it as reference.

GENE INFORMATION

Gene Name [MBNL1](#)

Official Symbol [MBNL1](#)

Synonyms EXP; MBNL

Gene ID [4154](#)

mRNA Refseq [NM_021038.5](#)

 Tel: 1-631-559-9269 1-516-512-3133

 Email: info@creative-biomart.com  Fax: 1-631-938-8127

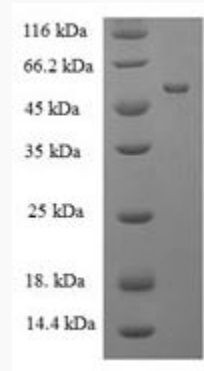
 45-1 Ramsey Road, Shirley, NY 11967, USA

Protein Refseq NP_066368.2

MIM 606516

UniProt ID Q9NR56

**SDS-PAGE of
MBNL1-6556H**



(Tris-Glycine gel) Discontinuous SDS-PAGE (reduced) with 5% enrichment gel and 15% separation gel.

 Tel: 1-631-559-9269 1-516-512-3133

 Email: info@creative-biomart.com  Fax: 1-631-938-8127

 45-1 Ramsey Road, Shirley, NY 11967, USA