

Recombinant Human MBNL2 Protein, Myc/DDK-tagged, C13 and N15-labeled

Cat. No. MBNL2-5823H Lot. No. (See product label)

SPECIFICATION

Product Overview	MBNL2 MS Standard C13 and N15-labeled recombinant protein (NP_997187) with a C-terminal MYC/DDK tag, was expressed in HEK293 cells.
Species	Human
Source	HEK293
Description	This gene is a member of the muscleblind protein family which was initially described in <i>Drosophila melanogaster</i> . This gene encodes a C3H-type zinc finger protein that modulates alternative splicing of pre-mRNAs. Muscleblind proteins bind specifically to expanded dsCUG RNA but not to normal size CUG repeats and may thereby play a role in the pathophysiology of myotonic dystrophy. Several alternatively spliced transcript variants have been described but the full-length nature of only some have been determined.
Molecular Mass	39.4 kDa
AA Sequence	MALNVAPVRDTKWLTLEVCRQFQRGTCSRSD EECKFAHPPKSCQVENGRVIACFD SLKGRCSRENCKYLHPPTH LKTQLEINGRN NLIQQKTA AAMLAQQMQFMFPGTPLH PVPTFPVGP AIGTNTAISFAPYLAPVTPGVGLVPTEILPTTPVIVPGSPPVTVPGSTAT QKLLRTDKLEVCRE FQRGNCARGETDCRFAHPADSTMIDTSDNTVTVCM DYIKGRC MRECKYFHPPAHLQAKIKAAQH QANQAAVA AAAAAAAAAATVMAFPPGALHPLPKRQ ALEKSNGTSAVFNP SVLHYQQAL TSAQLQQHAAFIPTD NSEIISRNGMECQESALRIT

 Tel: 1-631-559-9269 1-516-512-3133

 Email: info@creative-biomart.com  Fax: 1-631-938-8127

 45-1 Ramsey Road, Shirley, NY 11967, USA

KHCYCTYYPVSSSIELPQTACTRTRPLEQKLISEEDLAANDILDYKDDDDKV

Purity > 80% as determined by SDS-PAGE and Coomassie blue staining

Stability Stable for 3 months from receipt of products under proper storage and handling conditions.

Storage Store at -80 centigrade. Avoid repeated freeze-thaw cycles.

Concentration 50 µg/mL as determined by BCA

Storage Buffer 100 mM glycine, 25 mM Tris-HCl, pH 7.3.

GENE INFORMATION

Gene Name [MBNL2 muscleblind-like splicing regulator 2 \[Homo sapiens \(human\) \]](#)

Official Symbol [MBNL2](#)

Synonyms MBNL2; muscleblind-like splicing regulator 2; muscleblind like 2 (Drosophila); muscleblind-like protein 2; MBLL; MBLL39; muscleblind-like 2; muscleblind-like protein 1; muscleblind-like protein-like 39; PRO2032; RP11-128N14.1; MGC120625; MGC120626; MGC120628; DKFZp781H1296;

Gene ID [10150](#)

mRNA Refseq [NM_207304](#)

Protein Refseq [NP_997187](#)

MIM [607327](#)

 Tel: 1-631-559-9269 1-516-512-3133

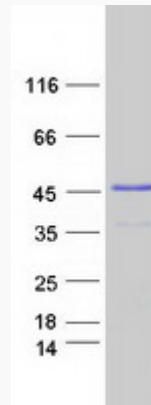
 Email: info@creative-biomart.com  Fax: 1-631-938-8127

 45-1 Ramsey Road, Shirley, NY 11967, USA

UniProt ID

Q5VZF2

SDS-PAGE



 Tel: 1-631-559-9269 1-516-512-3133

 Email: info@creative-biomart.com  Fax: 1-631-938-8127

 45-1 Ramsey Road, Shirley, NY 11967, USA