

## Recombinant MBP Protein

Cat. No. MBP-01 Lot. No. (See product label)

### SPECIFICATION

**Product Overview** Recombinant MBP Protein without tag was expressed in E. coli.

**Source** E.coli

**AA Sequence**  
MKIEEGKLVWINGDKGYNGLAEVGGKFEKDTGIKVTVEHPDKLEEKFPQVAATGDG  
PDIIFWAHDRFGGYAQSGLLAEITPDKAFQDKLYPFTWDAVRYNGKLIAYPIAVEALS  
LIYNKDLLPNPPKTWEEIPALDKELKAKGKSALMFNLQEPYFTWPLIAADGGYAFKYE  
NGKYDIKDVGVNAGAKAGLTFLVDLIKHKHMNADTDYSIAEAAFNKGETAMTINGP  
WAWSNIDTSKVNYGVTVLPTFKGQPSKPFVGVLSAGINAASPNKELAKEFLENYLLT  
DEGLEAVNKDKPLGAVALKSYEEELAKDPRIAATMENAQKGEIMPNIQMSAFWYAV  
RTAVINAASGRQTVDEALKDAQT

**Purity** > 90% by SDS-PAGE

**Storage** Short Term Storage at +4 centigrade. Long Term Storage at -20 to -80 centigrade.  
Avoid freeze/thaw cycles.

**Concentration** 2.2 mg/mL

**Storage Buffer** 50mM Tris-HCl, 150mM NaCl, pH 8.0

### GENE INFORMATION

**Official Symbol** MBP

 Tel: 1-631-559-9269 1-516-512-3133

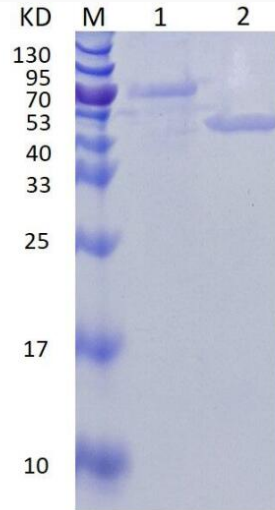
 Email: [info@creative-biomart.com](mailto:info@creative-biomart.com)  Fax: 1-631-938-8127

 45-1 Ramsey Road, Shirley, NY 11967, USA

**Synonyms**

MBP


**12% reducing SDS-  
PAGE analysis of  
purified MBP**



Lane M: Protein Marker

Lane 1: BSA 3.2 µg

Lane 2: MBP 3.5 µg

 Tel: 1-631-559-9269 1-516-512-3133

 Email: [info@creative-biomart.com](mailto:info@creative-biomart.com)  Fax: 1-631-938-8127

 45-1 Ramsey Road, Shirley, NY 11967, USA