

## Active Recombinant Human MBP protein, His-tagged

Cat. No. MBP-476H Lot. No. (See product label)

### SPECIFICATION

<b>Product Overview</b>	Active Recombinant Human MBP protein(P02686)(1~304 aa), fused with N-terminal His tag, was expressed in HEK293.
<b>Species</b>	Human
<b>Source</b>	HEK293
<b>ProteinLength</b>	1-304 aa
<b>Form</b>	Lyophilized from sterile PBS, pH7.4, containing 0.01% SKL, 1mM DTT, 5% Trehalose and Proclin300.
<b>Bio-activity</b>	Myelin basic protein (MBP), a 18.5-kDa encephalitogenic peptide, is the second most abundant in central nervous system and responsible for adhesion of the cytosolic surfaces of multilayered compact myelin, MBP is biased expressed in cerebellum adult and cortex adult. It can interact with a number of polyanionic proteins including actin, tubulin, Ca(2)-calmodulin, and clathrin, and negatively charged lipids, and acquires structure on binding to them. Calmodulin Like Protein 3 (CALML3) is a kind of Ca(2)-calmodulin, thus a functional binding ELISA assay was conducted to detect the interaction of recombinant human MBP and recombinant human CALML3. Briefly, biotin-linked MBP were diluted serially in PBS, with 0.01% BSA (pH 7.4). Duplicate samples of 100 ul were then transferred to CALML3-coated microtiter wells and incubated for 1h at 37°C. Wells were washed with PBST 3 times and incubation with Streptavidin-HRP for 30min, then wells were aspirated and washed 5 times. With the

 Tel: 1-631-559-9269 1-516-512-3133

 Email: [info@creative-biomart.com](mailto:info@creative-biomart.com)  Fax: 1-631-938-8127

 45-1 Ramsey Road, Shirley, NY 11967, USA

addition of substrate solution, wells were incubated 15-25 minutes at 37°C. Finally, add 50 µstop solution to the wells and read at 450 nm immediately. The binding activity of recombinan human MBP and recombinan human CALML3 was shown, the EC50 for this effect is 7.4 ug/mL.

<b>Molecular Mass</b>	34.7kDa
<b>Endotoxin</b>	<1.0EU per 1µg (determined by the LAL method).
<b>Purity</b>	> 95% as determined by SDS-PAGE.
<b>Storage</b>	Avoid repeated freeze/thaw cycles. Store at -20°C for 12 months. Aliquot and store at -80°C for 12 months.
<b>Reconstitution</b>	Reconstitute in 20mM Tris, 150mM NaCl (pH8.0) to a concentration of 0.1-1.0 mg/mL. Do not vortex.

## GENE INFORMATION

<b>Gene Name</b>	<a href="#">MBP myelin basic protein [ Homo sapiens ]</a>
<b>Official Symbol</b>	<a href="#">MBP</a>
<b>Synonyms</b>	MBP; myelin basic protein; Golli-MBP; myelin basic protein; myelin A1 protein; myelin membrane encephalitogenic protein; MGC99675;
<b>Gene ID</b>	<a href="#">4155</a>
<b>mRNA Refseq</b>	<a href="#">NM_001025081</a>
<b>Protein Refseq</b>	<a href="#">NP_001020252</a>

 Tel: 1-631-559-9269 1-516-512-3133

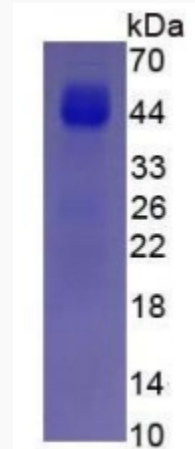
 Email: [info@creative-biomart.com](mailto:info@creative-biomart.com)  Fax: 1-631-938-8127

 45-1 Ramsey Road, Shirley, NY 11967, USA

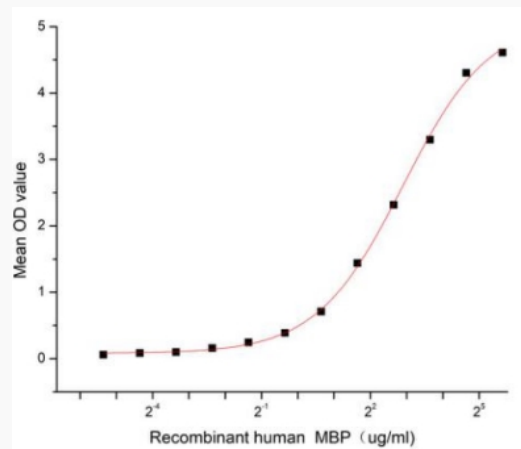
MIM 159430

UniProt ID P02686

SDS-PAGE



Activity



 Tel: 1-631-559-9269 1-516-512-3133

 Email: [info@creative-biomart.com](mailto:info@creative-biomart.com)  Fax: 1-631-938-8127

 45-1 Ramsey Road, Shirley, NY 11967, USA