

Human Myelin basic protein

Cat. No. MBP-6947H **Lot. No.** (See product label)

SPECIFICATION

Product Overview	Human Myelinbasic protein, was highly Purified from human brain by method of Määttä etal.
Species	Human
Source	Human Brain
Description	<p>MBP is a peripheral membrane protein, and its interaction with lipids is generally believed to be critical for the formation and stability of the multilamellar myelin sheath. It has been identified as a Ca²⁺-calmodulin regulated agent for actin polymerization, tropomyosin and actomyosin function, tubulin stabilization, and clathrin assembly. MBP is generally considered to be the antigen responsible for autoimmunity in multiple sclerosis (MS) and it has the capability to induce experimental allergic encephalomyelitis (EAE). MBP is also an endogenous inhibitor of the high-affinity cannabinoid binding site in the brain and a substrate for numerous protein kinases (MAPK, serine/threonine kinase, protein kinase C). MBP is also suggested to be involved in intracellular signalling and as cytoskeletal components.</p>
Concentration	1 mg/ml after reconstitution
Appearance	White to off-white powder.
Formulation	Lyophilized. Essentially salt-free.
Purity	>95% (SDS-PAGE; Immunoblot)

 Tel: 1-631-559-9269 1-516-512-3133

 Email: info@creative-biomart.com  Fax: 1-631-938-8127

 45-1 Ramsey Road, Shirley, NY 11967, USA

Reconstitution	Reconstituted with distilled water
Application	Can be used to induce relapsing experimental autoimmune encephalomyelitis in animals. This product may also be used as a substrate for protein kinases.
Storage	Stable for at least 1 year when stored at +4°C. Reconstituted protein is stable for at least six months at -20°C and for at least 24 hours at +37°C in aqueous solution.

GENE INFORMATION

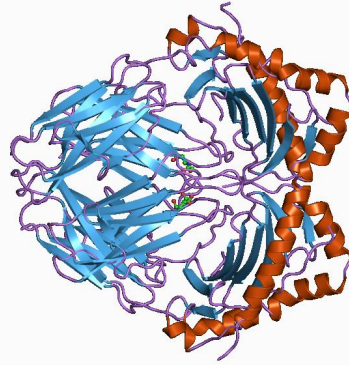
Gene Name	MBP myelin basic protein [Homo sapiens]
Synonyms	myelin basic protein; MGC99675; MBP; Golli-MBP; myelin A1 protein; myelin membrane encephalitogenic protein; OTTHUMP00000163776; OTTHUMP00000174387; OTTHUMP00000174388
Gene ID	4155
mRNA Refseq	NM_001025081
Protein Refseq	NP_001020252
MIM	159430
UniProt ID	P02686
Chromosome Location	18q23
Function	structural constituent of myelin sheath

 Tel: 1-631-559-9269 1-516-512-3133

 Email: info@creative-biomart.com  Fax: 1-631-938-8127

 45-1 Ramsey Road, Shirley, NY 11967, USA

Rendering of MBP
from PDB 1BX2



 Tel: 1-631-559-9269 1-516-512-3133

 Email: info@creative-biomart.com  Fax: 1-631-938-8127

 45-1 Ramsey Road, Shirley, NY 11967, USA