

Bovine Myelin basic protein, Biotin-Conjugated

Cat. No. MBP-6949B **Lot. No.** (See product label)

SPECIFICATION

Product Overview	Bovine Myelin basic protein, biotin-conjugated, was highly Purified from bovine central nervous system tissue by method of Määttä et al.
Species	Bovine
Source	Bovine Central Nervous System Tissue
Description	MBP is a peripheral membrane protein, and its interaction with lipids is generally believed to be critical for the formation and stability of the multilamellar myelin sheath. It has been identified as a Ca ²⁺ -calmodulin regulated agent for actin polymerization, tropomyosin and actomyosin function, tubulin stabilization, and clathrin assembly. MBP is generally considered to be the antigen responsible for autoimmunity in multiple sclerosis (MS) and it has the capability to induce experimental allergic encephalomyelitis (EAE). MBP is also an endogenous inhibitor of the high-affinity cannabinoid binding site in the brain and a substrate for numerous protein kinases (MAPK, serine/threonine kinase, protein kinase C). MBP is also suggested to be involved in intracellular signalling and as cytoskeletal components.
Purity	≥95% (SDS-PAGE; immunoblot)
Formulation	Lyophilized. Essentially salt-free.
Reconstitution	Reconstitute with distilled water.
Application	Substrate for various kinases including MAPK, PKA, calmodulin-dependent protein

 Tel: 1-631-559-9269 1-516-512-3133

 Email: info@creative-biomart.com  Fax: 1-631-938-8127

 45-1 Ramsey Road, Shirley, NY 11967, USA

kinase, PKC and phosphorylase kinase. Raf1, MEK, and MEKK can also use MBP as a substrate. The biotinyl moiety allows this substrate to be used in conjunction with a streptavidin membrane in kinase assays.

Storage

Stable for at least 1 year when stored at +4°C. Reconstituted protein is stable for at least 6 months at -20°C and for at least 24 hours at +37°C in aqueous solution.

GENE INFORMATION

Gene Name MBP myelin basic protein [*Bostaurus*]

Official Symbol MBP

Synonyms MBP; myelin basic protein; myelin A1 protein; microtubule-stabilizing protein; 20kDa microtubule-stabilizing protein

Gene ID 618684

mRNA Refseq NM_001206674

Protein Refseq NP_001193603

Chromosome Location 24q11-q13.2

Function structural constituent of myelin sheath

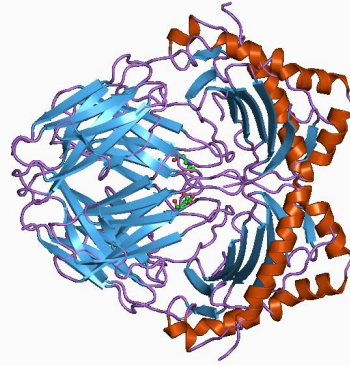
 Tel: 1-631-559-9269 1-516-512-3133

 Email: info@creative-biomart.com  Fax: 1-631-938-8127

 45-1 Ramsey Road, Shirley, NY 11967, USA



Rendering of MBP
from PDB 1BX2



Tel: 1-631-559-9269 1-516-512-3133

Email: info@creative-biomart.com Fax: 1-631-938-8127

45-1 Ramsey Road, Shirley, NY 11967, USA