

# Recombinant Human MBTD1 Protein, Myc/DDK-tagged, C13 and N15-labeled

Cat. No. MBTD1-3518H Lot. No. (See product label)

## SPECIFICATION

<b>Product Overview</b>	MBTD1 MS Standard C13 and N15-labeled recombinant protein (NP_060113) with a C-terminal MYC/DDK tag, was expressed in HEK293 cells.
<b>Species</b>	Human
<b>Source</b>	HEK293
<b>Description</b>	Putative Polycomb group (PcG) protein. PcG proteins maintain the transcriptionally repressive state of genes, probably via a modification of chromatin, rendering it heritably changed in its expressibility (By similarity). Specifically binds to monomethylated and dimethylated 'Lys-20' on histone H4.
<b>Molecular Mass</b>	70.4 kDa
<b>AA Sequence</b>	MFDGYDSCSEDTSSSSSSSEEESEEEVAPLPSNLPIIKNNGQVYTPDGKSGMATCEM CGMVGVRDAFYSKTKRFCSVSCSRSYSSNSKKASILARLQGKPPTKKAKVLQKQPL VAKLAAYAQYQATLQNQAKTKAAVSMEGFSWGNYSNSFIAAPVTCFKHAPMGTC WGDISENVRVEVPNTDCSLPTKVFVIAGIVKLAGYNALLRYEGFENDSGLDFWCNIC GSDIHPVGWCAASGKPLVPPRTIQHKYTNWKAFLVKRLTGAKTLPPDFSQKVSESM QYPFKPCMRVEVVDKRHLCTRTRVAVVESVIGGRLRLVYEESEDRTDDFWCHMHSP LIHHIGWSRSIGHRFKRSDITKKQDGHFDTPPHLFAKVKEVDQSGEWFKEGMKLEAI DPLNLSTICVATIRKVLADGFLMIGIDGSEAADGSDWFCYHATSPSIFPVGFCEINMIE LTPPRGYTKLPFKWFDYLRETGSIAAPVKLFNKDVPNHGFRVGMKLEAVDLMEPRLI

 Tel: 1-631-559-9269 1-516-512-3133

 Email: [info@creative-biomart.com](mailto:info@creative-biomart.com)  Fax: 1-631-938-8127

 45-1 Ramsey Road, Shirley, NY 11967, USA

CVATVTRIIHRLLRHFDGWEEYDQWVDCESPDLYPVGWCQLTGYQLQPPASQSS  
 RENQSASSKQKKKAKSQQYKGHKMTTLQLKEELLDGEDYNFLQGASDQESNGSA  
 NFYIKQEPTRTRPLEQKLISEEDLAANDILDYKDDDDKV

**Purity** > 80% as determined by SDS-PAGE and Coomassie blue staining

**Stability** Stable for 3 months from receipt of products under proper storage and handling conditions.

**Storage** Store at -80 centigrade. Avoid repeated freeze-thaw cycles.

**Concentration** 50 µg/mL as determined by BCA

**Storage Buffer** 100 mM glycine, 25 mM Tris-HCl, pH 7.3.

## GENE INFORMATION

**Gene Name** MBTD1 mbt domain containing 1 [ Homo sapiens (human) ]

**Official Symbol** MBTD1

**Synonyms** MBTD1; mbt domain containing 1; MBT domain-containing protein 1; FLJ20055; SA49P01; FLJ42067; MGC126785;

**Gene ID** 54799

**mRNA Refseq** NM\_017643

**Protein Refseq** NP\_060113

**MIM** 618705

 Tel: 1-631-559-9269 1-516-512-3133

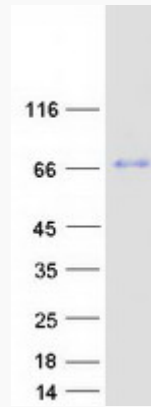
 Email: [info@creative-biomart.com](mailto:info@creative-biomart.com)  Fax: 1-631-938-8127

 45-1 Ramsey Road, Shirley, NY 11967, USA

UniProt ID

Q05BQ5

SDS-PAGE



 Tel: 1-631-559-9269 1-516-512-3133

 Email: [info@creative-biomart.com](mailto:info@creative-biomart.com)  Fax: 1-631-938-8127

 45-1 Ramsey Road, Shirley, NY 11967, USA