

# Recombinant Human MBTPS1 Protein (218-414 aa), His-SUMO-tagged

Cat. No. MBTPS1-2058H Lot. No. (See product label)

## SPECIFICATION

**Product Overview** Recombinant Human MBTPS1 Protein (218-414 aa) is produced by E. coli expression system. This protein is fused with a 6xHis-SUMO tag at the N-terminal. Research Area: Epigenetics and Nuclear Signaling. Protein Description: Partial.

**Species** Human

**Source** E.coli

**ProteinLength** 218-414 aa

**Description** Serine protease that catalyzes the first step in the proteolytic activation of the sterol regulatory element-binding proteins (SREBPs). Other known substrates are BDNF, GNPTAB and ATF6. Cleaves after hydrophobic or small residues, provided that Arg or Lys is in position P4. Cleaves known substrates after Arg-Ser-Val-Leu (SERBP-2), Arg-His-Leu-Leu (ATF6), Arg-Gly-Leu-Thr (BDNF) and its own propeptide after Arg-Arg-Leu-Leu. Mediates the protein cleavage of GNPTAB into subunit alpha and beta, thereby participating in biogenesis of lysosomes.

**Form** Tris-based buffer,50% glycerol

**Molecular Mass** 37.5 kDa

**AA Sequence** DTGLSEKHPHFKNVKERTNWTNERTLDDGLGHGTFVAGVIASMRECQGFAPDAEL  
HIFRVFTNNQVSYTSWFLDAFNAILKKIDVLNLSIGGPDFMDHPFVDKVVWELTANNV

 Tel: 1-631-559-9269 1-516-512-3133

 Email: [info@creative-biomart.com](mailto:info@creative-biomart.com)  Fax: 1-631-938-8127

 45-1 Ramsey Road, Shirley, NY 11967, USA

IMVSAIGNDGPLYGTLNNPADQMDVIGVGGIDFEDNIARFSSRGMTTWELPGGYGR  
MKPDIVTYGAGVRGSGVKGGCRALSGTS

**Purity** > 90% as determined by SDS-PAGE.

**Notes** Repeated freezing and thawing is not recommended. Store working aliquots at 4 centigrade for up to one week.

**Storage** The shelf life is related to many factors, storage state, buffer ingredients, storage temperature and the stability of the protein itself. Generally, the shelf life of liquid form is 6 months at -20 centigrade/-80 centigrade. The shelf life of lyophilized form is 12 months at -20 centigrade/-80 centigrade.

**Concentration** A hardcopy of COA with reconstitution instruction is sent along with the products.

## GENE INFORMATION

**Gene Name** [MBTPS1 membrane-bound transcription factor peptidase, site 1 \[ Homo sapiens \]](#)

**Official Symbol** [MBTPS1](#)

**Synonyms** MBTPS1; KIAA0091; PCSK8; S1P; SKI 1; site-1 protease; endopeptidase S1P; SKI-1; MGC138711; MGC138712;

**Gene ID** [8720](#)

**mRNA Refseq** [NM\\_003791](#)

**Protein Refseq** [NP\\_003782](#)

**MIM** [603355](#)

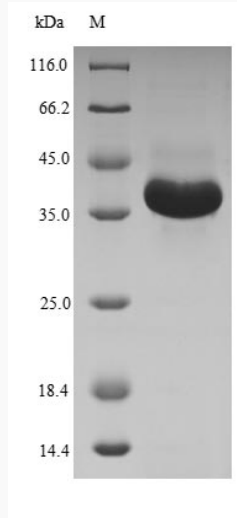
 Tel: 1-631-559-9269 1-516-512-3133

 Email: [info@creative-biomart.com](mailto:info@creative-biomart.com)  Fax: 1-631-938-8127

 45-1 Ramsey Road, Shirley, NY 11967, USA

UniProt ID

Q14703



(Tris-Glycine gel) Discontinuous SDS-PAGE (reduced) with 5% enrichment gel and 15% separation gel.

 Tel: 1-631-559-9269 1-516-512-3133

 Email: [info@creative-biomart.com](mailto:info@creative-biomart.com)  Fax: 1-631-938-8127

 45-1 Ramsey Road, Shirley, NY 11967, USA