

Recombinant Human MCAM Protein, Myc/DDK-tagged, C13 and N15-labeled

Cat. No. MCAM-1829H **Lot. No.** (See product label)

SPECIFICATION

Product Overview	MCAM MS Standard C13 and N15-labeled recombinant protein (NP_006491) with a C-terminal MYC/DDK tag, was expressed in HEK293 cells.
Species	Human
Source	HEK293
Description	Plays a role in cell adhesion, and in cohesion of the endothelial monolayer at intercellular junctions in vascular tissue. Its expression may allow melanoma cells to interact with cellular elements of the vascular system, thereby enhancing hematogeneous tumor spread. Could be an adhesion molecule active in neural crest cells during embryonic development. Acts as surface receptor that triggers tyrosine phosphorylation of FYN and PTK2/FAK1, and a transient increase in the intracellular calcium concentration.
Molecular Mass	71.4 kDa
AA Sequence	MGLPRLVCAFLLAACCCCPRVAGVPGAEQPAPELVEVEVGSTALLKCGLSQSQGN LSHVDWFSVHKEKRTLIFRVRQGQGQSEPGEYEQRSLQDRGATLALTQVTPQDE RIFLCQGKRPRSQEYRIQLRVYKAPEEPNIQVNPLGIPVNSKEPEEVATCVGRNGYPI PQVIWYKNGRPLKEEKNRVHIQSSQTVESSGLYTLQSILKAQLVKEDKDAQFYCELN YRLPSGNHMKESREVTVPVFYPTKEVWLEVEPVGMLKEGDRVEIRCLADGNPPPHF SISKQNPSTREAEETTNDNGVLVLEPARKEHSGRYECQGLDLDTMISLLSEPQELL

 Tel: 1-631-559-9269 1-516-512-3133

 Email: info@creative-biomart.com  Fax: 1-631-938-8127

 45-1 Ramsey Road, Shirley, NY 11967, USA

VNYVSDVRVSPAAPERQEGSSLTLTCEAESSQDLEFQWLREETGQVLERGPVLQLH
 DLKREAGGGYRCVASVPSIPGLNRTQLVNVAIFGPPWMAFKERKVVKENMVLNLS
 CEASGHPRTISWNVNGTASEQDQDPQRVLSTLNVLVTPELLETVECTASNDLGK
 NTSILFLELVNLTTLTPDSNTTGLSTSTASPHTRANSTSTERKLPEPESRGVVIVAVI
 VCILVLAVLGAVLYFLYKKGKLPARRSGKQEITLPPSRKSELVVEVKSDKLPEEMGLL
 QGSSGDKRAPGDQGEKYIDLRHTRTRPLEQKLISEEDLAANDILDYKDDDDKV

Purity > 80% as determined by SDS-PAGE and Coomassie blue staining

Stability Stable for 3 months from receipt of products under proper storage and handling conditions.

Storage Store at -80 centigrade. Avoid repeated freeze-thaw cycles.

Concentration 50 µg/mL as determined by BCA

Storage Buffer 100 mM glycine, 25 mM Tris-HCl, pH 7.3.

GENE INFORMATION

Gene Name [MCAM melanoma cell adhesion molecule \[Homo sapiens \(human\) \]](#)

Official Symbol [MCAM](#)

Synonyms MCAM; melanoma cell adhesion molecule; cell surface glycoprotein MUC18; CD146; Gicerin; MUC18; melanoma adhesion molecule; cell surface glycoprotein P1H12; melanoma-associated antigen A32; melanoma-associated antigen MUC18; S-endo 1 endothelial-associated antigen;

Gene ID [4162](#)

 Tel: 1-631-559-9269 1-516-512-3133

 Email: info@creative-biomart.com  Fax: 1-631-938-8127

 45-1 Ramsey Road, Shirley, NY 11967, USA

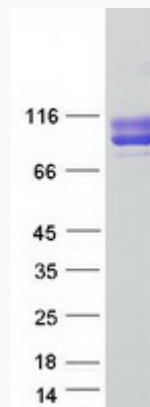
mRNA Refseq [NM_006500](#)

Protein Refseq [NP_006491](#)

MIM [155735](#)

UniProt ID [P43121](#)

SDS-PAGE



 Tel: 1-631-559-9269 1-516-512-3133

 Email: info@creative-biomart.com  Fax: 1-631-938-8127

 45-1 Ramsey Road, Shirley, NY 11967, USA