

Recombinant Human MCAM Protein (Met1-Gly559), C-His tagged

Cat. No. MCAM-4514H **Lot. No.** (See product label)

SPECIFICATION

Product Overview	Recombinant human MCAM (Met1-Gly559) fused with the C-terminal His tag was expressed in Mammalian cells.
Species	Human
Source	Mammalian Cells
ProteinLength	Met1-Gly559
Form	Lyophilized powder/frozen liquid
Molecular Mass	61.49 kDa
Endotoxin	< 1.0 EU/μg of the protein as determined by the LAL method.
Purity	>90% as determined by SDS-PAGE.
Notes	For research use only.
Storage	Use a manual defrost freezer and avoid repeated freeze thaw cycles. Store at 2 to 8 centigrade for one week. Store at -20 to -80 centigrade for twelve months from the date of receipt.
Storage Buffer	Supplied as solution form in PBS or lyophilized from PBS.

 Tel: 1-631-559-9269 1-516-512-3133

 Email: info@creative-biomart.com  Fax: 1-631-938-8127

 45-1 Ramsey Road, Shirley, NY 11967, USA

Reconstitution Reconstitute in sterile water for a stock solution.

Shipping They are shipped out with dry ice/blue ice unless customers require otherwise.

GENE INFORMATION

Gene Name [MCAM melanoma cell adhesion molecule \[Homo sapiens \(human\) \]](#)

Official Symbol [MCAM](#)

Synonyms MCAM; melanoma cell adhesion molecule; cell surface glycoprotein MUC18; CD146; Gicerin; MUC18; melanoma adhesion molecule; cell surface glycoprotein P1H12; melanoma-associated antigen A32; melanoma-associated antigen MUC18; S-endo 1 endothelial-associated antigen;

Gene ID [4162](#)

mRNA Refseq [NM_006500](#)

Protein Refseq [NP_006491](#)

MIM [155735](#)

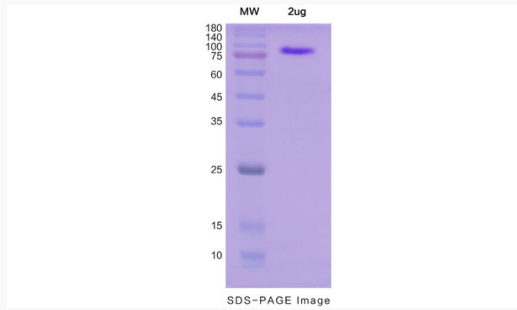
UniProt ID [P43121](#)

 Tel: 1-631-559-9269 1-516-512-3133

 Email: info@creative-biomart.com  Fax: 1-631-938-8127

 45-1 Ramsey Road, Shirley, NY 11967, USA

SDS-PAGE



 Tel: 1-631-559-9269 1-516-512-3133

 Email: info@creative-biomart.com  Fax: 1-631-938-8127

 45-1 Ramsey Road, Shirley, NY 11967, USA