

## Active Recombinant Human MCAM protein, Fc-tagged

Cat. No. MCAM-615H Lot. No. (See product label)

### SPECIFICATION

<b>Product Overview</b>	Active Recombinant Human MCAM protein(Met 1-Gly 559)(NP_006491.2) was expressed in Human Cells with the C-terminal fused Fc region of human IgG1.
<b>Species</b>	Human
<b>Source</b>	Human Cells
<b>ProteinLength</b>	1-559 aa
<b>Form</b>	Lyophilized from sterile PBS, pH 7.4.
<b>Bio-activity</b>	Measured by the ability of the immobilized protein to support the adhesion of the HUVEC human umbilical vein endothelial cell line. When 3 x 10E4 cells/well are added to human CD146 coated plates (0.5 µg/ml, 100 µl/well), approximately >30 % will adhere after one hour at 37 °C.
<b>Molecular Mass</b>	The recombinant CD146/Fc chimera comprises 774 amino acids and predicts a molecular mass of 86.4 kDa. As a result of glycosylation, the recombinant protein migrates as an approximately 120-130 kDa band in SDS-PAGE under reducing conditions.
<b>Endotoxin</b>	< 1.0 EU per µg of the protein as determined by the LAL method.
<b>Purity</b>	> 95 % as determined by SDS-PAGE

 Tel: 1-631-559-9269 1-516-512-3133

 Email: [info@creative-biomart.com](mailto:info@creative-biomart.com)  Fax: 1-631-938-8127

 45-1 Ramsey Road, Shirley, NY 11967, USA

**Storage** Store it under sterile conditions at -20°C to -80°C upon receiving. Recommend to aliquot the protein into smaller quantities for optimal storage. Avoid repeated freeze-thaw cycles.

**Reconstitution** It is recommended that sterile water be added to the vial to prepare a stock solution of 0.2 ug/ul. Centrifuge the vial at 4°C before opening to recover the entire contents.

## GENE INFORMATION

**Gene Name** [MCAM melanoma cell adhesion molecule \[ Homo sapiens \]](#)

**Official Symbol** [MCAM](#)

**Synonyms** MCAM; melanoma cell adhesion molecule; cell surface glycoprotein MUC18; CD146; Gicerin; MUC18; melanoma adhesion molecule; cell surface glycoprotein P1H12; melanoma-associated antigen A32; melanoma-associated antigen MUC18; S-endo 1 endothelial-associated antigen;

**Gene ID** [4162](#)

**mRNA Refseq** [NM\\_006500](#)

**Protein Refseq** [NP\\_006491](#)

**MIM** [155735](#)

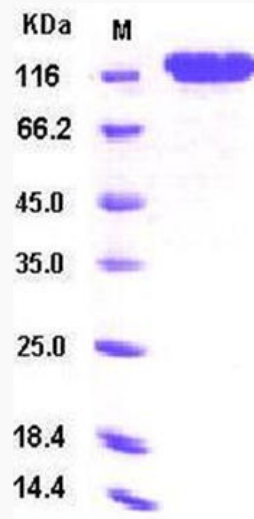
**UniProt ID** [P43121](#)

 Tel: 1-631-559-9269 1-516-512-3133

 Email: [info@creative-biomart.com](mailto:info@creative-biomart.com)  Fax: 1-631-938-8127

 45-1 Ramsey Road, Shirley, NY 11967, USA

**SDS-PAGE**



 Tel: 1-631-559-9269 1-516-512-3133

 Email: [info@creative-biomart.com](mailto:info@creative-biomart.com)  Fax: 1-631-938-8127

 45-1 Ramsey Road, Shirley, NY 11967, USA