

Recombinant Human MCAM protein, His-tagged

Cat. No. MCAM-682H Lot. No. (See product label)

SPECIFICATION

Product Overview	Recombinant Human MCAM protein(NP_006491)(26-350 aa), fused to His tag, was expressed in E. coli.
Species	Human
Source	E.coli
ProteinLength	26-350 aa
Form	The purified protein was Lyophilized from sterile PBS (58mM Na ₂ HPO ₄ , 17mM NaH ₂ PO ₄ , 68mM NaCl, pH7.). 5 % trehalose and 5 % mannitol are added as protectants before lyophilization.
AA Sequence	<p>GEAEQPAPELVEVEVGSTALLKCGLSQSQGNLSHVDWFSVHKEKRTLIFRVRQGQG QSEPGEYEQRSLQDRGATLALTQVTPQDERIFLCQGKRPRSQEYRIQLRVYKAPE EPNIQVNPLGIPVNSKEPEEVATCVGRNGYPIPQVIWYKNGRPLKEEKNRVHIQSSQ TVESSGLYTLQSILKAQLVKEDKDAQFYCELNYRLPSGNHMKESREVTVPVFYPTK VWLEVEPVGMLKEGDRVEIRCLADGNPPPHFSISKQNPSTREAAEEETTNDNGVLVL EPARKEHSGRYECQGLDLDTMISLLSEPQELLVNYVSDVRVSP</p>
Purity	90%, by SDS-PAGE with Coomassie Brilliant Blue staining.
Storage	<p>Short-term storage: Store at 2-8°C for (1-2 weeks).</p> <p>Long-term storage: Aliquot and store at -20°C to -80°C for up to 3 months, buffer containing 50% glycerol is recommended for reconstitution. Avoid repeat freeze-thaw</p>

 Tel: 1-631-559-9269 1-516-512-3133

 Email: info@creative-biomart.com  Fax: 1-631-938-8127

 45-1 Ramsey Road, Shirley, NY 11967, USA

cycles.

Reconstitution

Reconstitute at 0.25 g/μl in 200 μl sterile water for short-term storage.

Reconstitution with 200 μl 50% glycerol solution is recommended for longer term storage (see Stability and Storage for more details).

If a different concentration is needed for your purposes please adjust the reconstitution volume as required (please note: the ion concentration of the final solution will vary according to the volume used).

Note: Centrifuge vial before opening. When reconstituting, gently pipet and wash down the sides of the vial to ensure full recovery of the protein into solution.

GENE INFORMATION

Gene Name

MCAM melanoma cell adhesion molecule [Homo sapiens]

Official Symbol

MCAM

Synonyms

MCAM; melanoma cell adhesion molecule; cell surface glycoprotein MUC18; CD146; Gicerin; MUC18; melanoma adhesion molecule; cell surface glycoprotein P1H12; melanoma-associated antigen A32; melanoma-associated antigen MUC18; S-endo 1 endothelial-associated antigen;

Gene ID

4162

mRNA Refseq

NM_006500

Protein Refseq

NP_006491

MIM

155735

UniProt ID

P43121

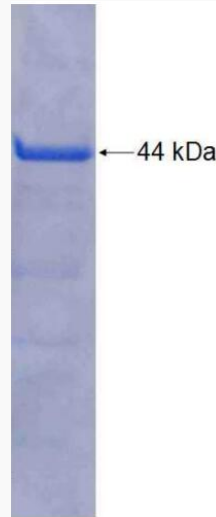
 Tel: 1-631-559-9269 1-516-512-3133

 Email: info@creative-biomart.com  Fax: 1-631-938-8127

 45-1 Ramsey Road, Shirley, NY 11967, USA



SDS-PAGE



Tel: 1-631-559-9269 1-516-512-3133

Email: info@creative-biomart.com Fax: 1-631-938-8127

45-1 Ramsey Road, Shirley, NY 11967, USA