

Recombinant Human MCAT Protein, GST-tagged

Cat. No. MCAT-5680H Lot. No. (See product label)

SPECIFICATION

Product Overview	Human MT partial ORF (NP_775738, 291 a.a. - 390 a.a.) recombinant protein with GST-tag at N-terminal.
Species	Human
Source	Wheat Germ
Description	The protein encoded by this gene is found exclusively in the mitochondrion, where it catalyzes the transfer of a malonyl group from malonyl-CoA to the mitochondrial acyl carrier protein. The encoded protein may be part of a fatty acid synthase complex that is more like the type II prokaryotic and plastid complexes rather than the type I human cytosolic complex. Two transcript variants encoding different isoforms have been found for this gene. [provided by RefSeq]
Molecular Mass	36.74 kDa
AA Sequence	KKPLVSVYSNVHAHRYRHPGHIHKLLAQQLVSPVKWEQTMHAIYERKKGRGFPQTF EVGPGRQLGAILKSCNMQAWKSYSVAVDVLQTLEHVDLDPQEPPR
Applications	Enzyme-linked Immunoabsorbent Assay Western Blot (Recombinant protein) Antibody Production Protein Array
Notes	Best use within three months from the date of receipt of this protein.

 Tel: 1-631-559-9269 1-516-512-3133

 Email: info@creative-biomart.com  Fax: 1-631-938-8127

 45-1 Ramsey Road, Shirley, NY 11967, USA

Storage	Store at -80 centigrade. Aliquot to avoid repeated freezing and thawing.
Storage Buffer	50 mM Tris-HCl, 10 mM reduced Glutathione, pH=8.0 in the elution buffer.
GENE INFORMATION	
Gene Name	MCAT malonyl CoA:ACP acyltransferase (mitochondrial) [Homo sapiens]
Official Symbol	MCAT
Synonyms	MCAT; malonyl CoA:ACP acyltransferase (mitochondrial); malonyl-CoA-acyl carrier protein transacylase, mitochondrial; fabD; FASN2C; MCT; MT; NET62; mitochondrial malonyltransferase; [Acyl-carrier-protein] malonyltransferase; mitochondrial malonyl CoA:ACP acyltransferase; malonyl-CoA:acyl carrier protein transacylase, mitochondrial; MGC47838;
Gene ID	27349
mRNA Refseq	NM_014507
Protein Refseq	NP_055322
MIM	614479
UniProt ID	Q8IVS2

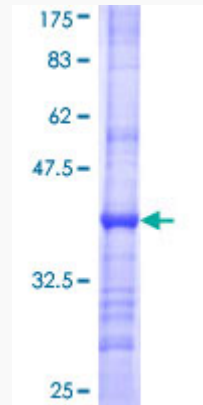
 Tel: 1-631-559-9269 1-516-512-3133

 Email: info@creative-biomart.com  Fax: 1-631-938-8127

 45-1 Ramsey Road, Shirley, NY 11967, USA

Quality Control

Testing:



12.5% SDS-PAGE Stained with Coomassie Blue.

 Tel: 1-631-559-9269 1-516-512-3133

 Email: info@creative-biomart.com  Fax: 1-631-938-8127

 45-1 Ramsey Road, Shirley, NY 11967, USA