

# Recombinant Human MCEMP1 Protein, Myc/DDK-tagged, C13 and N15-labeled

Cat. No. MCEMP1-5582H Lot. No. (See product label)

## SPECIFICATION

<b>Product Overview</b>	C19orf59 MS Standard C13 and N15-labeled recombinant protein (NP_777578) with a C-terminal MYC/DDK tag, was expressed in HEK293 cells.
<b>Species</b>	Human
<b>Source</b>	HEK293
<b>Description</b>	This gene encodes a single-pass transmembrane protein. Based on its expression pattern, it is speculated to be involved in regulating mast cell differentiation or immune responses.
<b>Molecular Mass</b>	21.2 kDa
<b>AA Sequence</b>	MEVEEIIYKHQEVKMQAPAFRDKKQGVS AKNQG AHDPDYENITLAFKNQDHAKGGH SRPTSQVPAQCRPPSDSTQVPCWLYRAILSLYILLALAFVLCIILSAFIMVKNAEMSKE LLGFKRELWNVSNVQACEERQKRGWDSVQQSITMVR SKIDRLETTLAGIKNIDTKV QKILEVLQKMPQSSPQTRTRPLEQKLISEEDLAANDILDYKDDDDKV
<b>Purity</b>	> 80% as determined by SDS-PAGE and Coomassie blue staining
<b>Stability</b>	Stable for 3 months from receipt of products under proper storage and handling conditions.
<b>Storage</b>	Store at -80 centigrade. Avoid repeated freeze-thaw cycles.

 Tel: 1-631-559-9269 1-516-512-3133

 Email: [info@creative-biomart.com](mailto:info@creative-biomart.com)  Fax: 1-631-938-8127

 45-1 Ramsey Road, Shirley, NY 11967, USA

**Concentration** 50 µg/mL as determined by BCA

**Storage Buffer** 100 mM glycine, 25 mM Tris-HCl, pH 7.3.

## GENE INFORMATION

**Gene Name** MCEMP1 mast cell expressed membrane protein 1 [ Homo sapiens (human) ]

**Official Symbol** MCEMP1

**Synonyms** MCEMP1; mast cell expressed membrane protein 1; C19orf59; mast cell-expressed membrane protein 1; epididymis secretory sperm binding protein

**Gene ID** 199675

**mRNA Refseq** NM\_174918

**Protein Refseq** NP\_777578

**MIM** 609565

**UniProt ID** Q8IX19

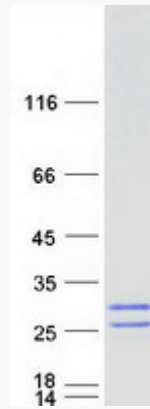
 Tel: 1-631-559-9269 1-516-512-3133

 Email: [info@creative-biomart.com](mailto:info@creative-biomart.com)  Fax: 1-631-938-8127

 45-1 Ramsey Road, Shirley, NY 11967, USA



SDS-PAGE



Tel: 1-631-559-9269 1-516-512-3133

Email: [info@creative-biomart.com](mailto:info@creative-biomart.com) Fax: 1-631-938-8127

45-1 Ramsey Road, Shirley, NY 11967, USA