

Recombinant Human MCFD2 protein, His-tagged

Cat. No. MCFD2-12H Lot. No. (See product label)

SPECIFICATION

Product Overview	Recombinant Human MCFD2 protein(1-146 aa), fused with N-terminal His Tag, was expressed in E. coli.
Species	Human
Source	E.coli
ProteinLength	1-146 aa
Tag	N-His
Form	The purified protein was Lyophilized from sterile PBS (58mM Na ₂ HPO ₄ , 17mM NaH ₂ PO ₄ , 68mM NaCl, pH7.4). 5 % trehalose and 5 % mannitol are added as protectant before lyophilization.
Purity	85%, by SDS-PAGE with Coomassie Brilliant Blue staining.
Storage	Short-term storage: Store at 2-8°C for (1-2 weeks). Long-term storage: Aliquot and store at -20°C to -80°C for up to 3 months, reconstitution with sterile water and addition of an equal volume of glycerol. Avoid repeat freeze-thaw cycles.
Reconstitution	Reconstitute at 0.25 µg/µl in 200 µl sterile water for short-term storage. After reconstitution with sterile water, if glycerol has no effect on subsequent experiments, it is recommended to add an equal volume of glycerol for long-term

 Tel: 1-631-559-9269 1-516-512-3133

 Email: info@creative-biomart.com  Fax: 1-631-938-8127

 45-1 Ramsey Road, Shirley, NY 11967, USA

storage.

AA Sequence

MTMRSLLRTPFLCGLLWAFCAPGARAEPAASFSSQPGSMGLDKNTVHDQEHIMEH
 LEGVINKPEAEMSPQELQLHYFKMHDYDGNLLDGLLELSTAITHVHKEEGSEQAPLM
 SEDELINIIDGVLRRDDDKNNDGYIDYAEFAKSLQ

GENE INFORMATION

Gene Name

[MCFD2 multiple coagulation factor deficiency 2 \[Homo sapiens \]](#)

Official Symbol

[MCFD2](#)

Synonyms

MCFD2; multiple coagulation factor deficiency 2; multiple coagulation factor deficiency protein 2; F5F8D; LMAN1IP; SDNSF; neural stem cell derived neuronal survival protein; neural stem cell-derived neuronal survival protein; F5F8D2; DKFZp686G21263;

Gene ID

[90411](#)

mRNA Refseq

[NM_001171506](#)

Protein Refseq

[NP_001164977](#)

MIM

[607788](#)

UniProt ID

[Q8NI22](#)

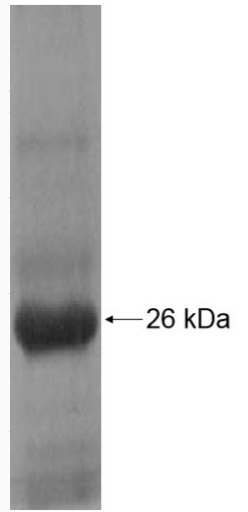
 Tel: 1-631-559-9269 1-516-512-3133

 Email: info@creative-biomart.com  Fax: 1-631-938-8127

 45-1 Ramsey Road, Shirley, NY 11967, USA



SDS-PAGE



☎ Tel: 1-631-559-9269 1-516-512-3133

☎ Email: info@creative-biomart.com ☎ Fax: 1-631-938-8127

☎ 45-1 Ramsey Road, Shirley, NY 11967, USA